

TTSH  
Community  
Fund

*A legacy of Giving, Caring and Serving*



*Coming Together as a Community*

ANNUAL REPORT FY2022

1 APR 2022 – 31 MAR 2023



## MISSION

Building on our tradition; reaching out to the community; doing our best to serve, care and heal; together, we aim for excellence in cost-effective healthcare, education and research.

## VISION

Adding years of healthy life.

## PURPOSE

To carry out health-related activities, including the pursuit of medical research and development, as well as the promotion, provision, and improvement of health services or health-related services that benefit the Singapore community.

# Contents

- 2** Mission, Vision, Purpose
- 4** Our Strategy
- 5** About Us
- 6** Board and Management
- 7** Governance
- 8** Our Key Programmes
- 12** Ng Teng Fong Healthcare Innovation Programme
- 16** Fundraising & Community Support
- 19** Financial Highlights
- 20** Financial Statement & Reserves Policy
- 23** List of Related Entities
- 24** Governance Policies
- 25** How You Can Help

---

TTSH Community Fund (UEN: 201400920N) was registered as a charity on 16 May 2014 and Incorporated as a Public Company Limited by Guarantee on 8 January 2014.

Our Charity has been accorded IPC (Institution of a Public Character) status since 16 May 2015 and our current IPC period is from 20 July 2021 to 19 July 2024.

Our Charity has Constitution and M&AA as our governing instruments.



# Our Strategy



**TTSH Community Fund, the charity arm of Tan Tock Seng Hospital (TTSH), shares a common strategic direction, mission, and vision with both the National Healthcare Group (NHG) and Tan Tock Seng Hospital (TTSH).**

TTSH serves as the flagship hospital of NHG in Singapore. As a pioneering hospital with strong roots in the community for 179 years, TTSH is recognised as the People's Hospital, serving a population of 1.4 million residents living in Central Singapore. Half (57%) of TTSH's inpatients are aged 65 years and above. This is above the national average of 30%.

In 2018, the hospital adopted the **Central Health Model of Care**, embarking on a transformative digitalisation journey towards a 'Hospital without Walls'. This change enables care to be delivered beyond the hospital anytime and anywhere - building **Communities of Care** in every neighbourhood as an integrated care network together with its primary and community care partners around Central Health.

With the launch of Healthier SG (Ministry of Health's life course approach to enhance population health), this initiative aims to shift its focus towards keeping the population out of hospitals and supporting them to age well at home. This can be accomplished through the development of wellness programmes and prioritising preventive care.

This approach, incentivises healthcare providers to prioritize value over quantity, benefitting the population and the healthcare system where patients can continue to be cared for beyond the hospital. Residents in the community can stay safe, healthy and age well, while care is focused on supporting people to lead healthier and more meaningful lives to achieve better health outcomes.



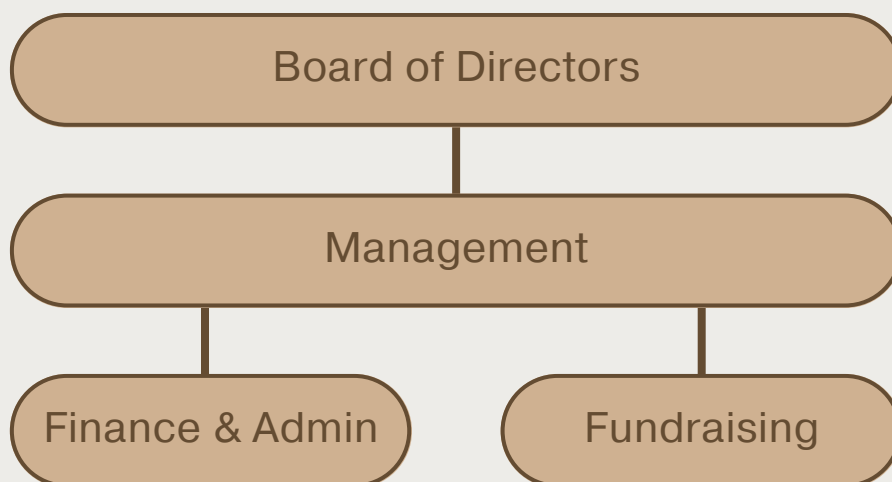
# About Us

In keeping with Mr Tan Tock Seng's legacy of giving, Tan Tock Seng Hospital (TTSH) set up a charity arm, TTSH Endowment Fund (now known as **TTSH Community Fund**) in August 1995 to improve the quality of life for our patients.

From expensive non-standard medication to breathing equipment, mobility aids and consumables for their daily living, we help needy patients gain greater independence, improve their quality of life and enabling them to integrate back into the community. Our Charity also actively supports healthcare research, innovation and training for our staff and the community to deliver better patient care.

---

## Organisation Chart



*\* Staff costs are supported by the hospital; hence, all donations go directly to our charity's activities.*

# Board and Management

## BOARD OF DIRECTORS

Name / Position	Date Joined	Designation / Company	Attendance
<b>Mdm Kay Kuok Oon Kwong</b> Chairman	7 Feb 2014	Director, Kuok (S) Ltd	2/2
<b>Ms Tan Yee Peng</b> Treasurer and Director	18 Aug 2021	Chief Executive Officer, Hercules Pte Ltd	2/2
<b>Mrs Eunice Toh</b> Executive Director	8 Jan 2014	Executive Director, TTSH Community Fund & Director, Development Fund, TTSH	2/2
<b>Ms Laura Kho Min Zhi</b> Director	18 Aug 2021	Director, Finance, MOH Holdings Pte Ltd	2/2
<b>Mr Seow Choke Meng</b> Director	7 Feb 2014	Chairman, Ren Ci Community Hospital	2/2
<b>Mr Tan Kia Tong</b> Director	5 Mar 2014	Technology Director, OSIM International Pte Ltd	0/2
<b>Mr Yap Wai Ming</b> Director	7 Feb 2014	Director, Morgan Lewis Stamford LLC	2/2
<b>Ms Saw Phaik Hwa</b> Director	7 Feb 2014	-	2/2
<b>Dr Tan Chi Chiu</b> Director	17 Aug 2017	Gastroenterologist, Medical Director & Senior Consultant of the Practice, Gastroenterology & Medicine International Pte Ltd	2/2

## EX-OFFICIO

<b>Dr Eugene Fidelis Soh</b>	10 Jan 2015	Chief Executive Officer, TTSH
<b>Prof Chin Jing Jih</b>	15 Apr 2019	Chairman Medical Board, TTSH

## COMPANY SECRETARY

<b>Ms Cynthia Chan</b>	15 Jan 2022	Director, Legal Services, TTSH
------------------------	-------------	--------------------------------

Two board meetings were held for the financial year ending 31 March 2023: on 20 Sep 2022 and 21 Mar 2023. All board members were present at the board meetings, except for one member who had provided valid reasons for not being able to attend. The Board of Directors' meeting attendance is disclosed to comply with the Code of Governance for Charities.

\* Our Directors hold multiple directorships, we have indicated only their main designation.





# Governance

## Information on Committees

TTSH Community Fund is not a large charity therefore we do not have sub-committees on board.

## Board Selection, Recruitment and Training

Individuals recognised for their integrity, expertise, and broad experience across the public or private sectors, are recommended by Board Directors and appointed by Chairman to the Board.

Every new Director undergoes a board orientation by the Executive Director or designate.

## Evaluating Board's Performance and Effectiveness

Our Charity has in place a self-evaluation checklist that is conducted once every three years or per term, whichever is earlier. This checklist is adapted from the Social Service Institute (SSI) Resources, the training arm of the National Volunteer and Philanthropy Centre (NVPC). We have tailored it to suit the needs and structure of our Charity.

## Board Re-nomination, Re-appointment and Retention

The Board of Directors is appointed for a term of three years, on a renewable basis, with a maximum tenure of service not exceeding 10 years.

In the event that a Director has served a maximum 10-year tenure, he/she may be re-appointed to the board even after the term limit, if the appointment is approved during the general meeting.

New members are introduced to ensure a smooth succession and transition when the tenure of existing members is due or when existing members step down.



# Our Key Programmes

## GENERAL NEEDY PATIENTS FUND (GNPF)



**Expenses: \$90,323**



**Number of Cases\*: 74**

The **General Needy Patients Fund (GNPF)** actively helps needy patients of Tan Tock Seng Hospital (TTSH) with their out-of-pocket medical expenses for services and equipment such as wheelchairs, walking aids, interim dialysis treatment, breathing equipment, diapers, wound dressings and more.

Mr Foo led a comfortable life as a consultant in the United States until an armed robbery in 2005 left him paralysed from the waist down due to a traumatic spinal injury.

Upon returning to Singapore, he underwent surgery and spent half a year in Tan Tock Seng Hospital (TTSH).

Reflecting on his experience, Mr. Foo shared how it was life-changing, physically and psychologically. He lost his source of income and could not hold down a freelance job due to his condition. However, the support from the hospital team, including doctors, nurses, and allied health professionals, gave him confidence as he progressed from trauma to rehabilitation. He now adapts his lifestyle to his medical condition.

Rehab therapy equipped him with basic skills for daily activities, and he is grateful for the assistance from TTSH Community Fund. Our Charity provided him with a hospital bed, an air mattress, and a power device for his wheelchair, all of which have been instrumental in improving his quality of life. Being able to move around on his own in a wheelchair has not only boosted his spirits but also granted him greater independence.



“

*TTSH Community Fund has provided me with hospital bed, air mattress and a power device to automate my wheelchair.*

*- Mr Foo Fung Liang,  
a GNPF beneficiary*

”

\* The number of cases refers to patients who may apply to more than one programmes/funds across our charity, as these patients commonly face multiple health challenges.



# Our Key Programmes

## COMMUNITY REHABILITATION PROGRAMME (CRP)



**Expenses: \$978,516**



**Number of Sessions: 3198**

Rehabilitation is an integral part of a patient's recovery process and our **Community Rehabilitation Programme (CRP)** actively provides home rehabilitation services for low-income patients who are unable to afford expensive commercial rehabilitation services which can cost an average of \$140 per 45-minute session. Each patient usually requires 11 to 15 sessions to see improvements, and CRP heavily subsidises these fees, with most patients paying a very small sum or receiving support through public assistance.

As these patients are usually homebound or bedbound, CRP brings rehabilitation therapy services to their homes, helping to improve mobility and functionality, enabling them to integrate back into the community.



## IWANTTOGOHOME (IWGH) FUND



**Expenses: \$331,410**



**Number of Cases\*: 562**



Many patients want to go home quickly, but a number of patients, especially the elderly, cannot afford the out-of-pocket expenses for necessary medical services, equipment, and consumables for continued care at home.

**IWanttoGoHome (IWGH)** provides timely support for these needy patients, from interim care services such as interim dialysis while waiting for the processing of their application with the National Kidney Foundation (NKF) Singapore, to providing equipment like wheelchairs, walking sticks, oxygen equipment, hearing aids, hospital beds — the list goes on. The programme also provides consumables such as adult diapers, wound dressings, insulin syringes, meal and nutrition services, and even transport services — all of which needy patients cannot afford on their own.

*\* The number of cases refers to patients who may apply to more than one programmes/funds across our charity, as these patients commonly face multiple health challenges.*

# Our Key Programmes

## HELPING ELDERLY PATIENTS (HELP) PROGRAMME



**Expenses: \$117,430**



**Number of Cases\*: 69**

Patients supported under **HELP** are the elderly aged 55 years and above who have little or no savings. In some cases, they do not have any caregivers to turn to.



The programme enables these needy elderly patients to gain access to proper treatment and care, which in turn enable them to maintain their health and enjoy a better quality of life. This reduces hospital readmissions and cuts down on out-of-pocket expenses.

## PROGRAMME OF ALL INCLUSIVE CARE FOR THE TERMINALLY ILL (PACT) FUND



**Expenses: \$4,400**



**Number of Beneficiaries: 34**



**PACT** helps terminally ill patients and families by providing interim funding for the expenses needed to care for patients in their homes or the community. It also engages patients in activities such as art and music therapy with the objective of alleviating pain and symptoms, improving anxiety and depression, and enhancing communication.

\* The number of cases refers to patients who may apply to more than one programmes/funds across our charity, as these patients commonly face multiple health challenges.



# Our Key Programmes

## NCID (NATIONAL CENTRE FOR INFECTIOUS DISEASES) CARES



**Expenses: \$104,099**



**Number of Beneficiaries: 239**

HIV/AIDS affects patients physically and emotionally. Many patients not only face the physical impact as the virus destroys their immune system, but they also face discrimination and stigmatization due to misinformation about HIV/AIDS, which may lead to social isolation. The **NCID Cares – PCC programme** looks after these patients' physical and emotional well-being and provides support for their families.

### **Some of the NCID Cares activities are highlighted below:**

Last year, over 145 beneficiaries benefited from the monthly nutritional programme, receiving a food ration bag consisting of basic items such as rice, oil, instant noodles, oats, biscuits, and more. The aim was to aid people living with HIV (PLHIV) and their families in offsetting their grocery costs. The **NCID Cares - PCC programme** also offered financial assistance to needy patients for Antiretroviral Therapy and vital diagnostic tests, including HIV Viral Load and genotypic resistance tests to evaluate treatment effectiveness.



In September 2022, patient volunteers from the **NCID Cares - Red Ribbon Project** resumed **Pushcart@TTSH**. Beneficiaries crafted handmade items to sell, and help generate income for the programme. The programme aims to enhance patients' confidence and self-esteem. It also seeks to equip them with life skills through interactions with individuals from various cultures and environments, while providing assistance to help them cope with their psychosocial needs.



In April 2022, a mini bazaar was organised featuring handmade handicrafts crafted by our patient volunteers. The proceeds from the sales of the handicrafts went towards supporting the **Red Ribbon Project**, which assists needy patients in our community.

# Ng Teng Fong Healthcare Innovation Programme

In 2015, the family of the late Mr Ng Teng Fong contributed \$52 million to TTSH Community Fund to set up the **Ng Teng Fong Healthcare Innovation Programme (NTF HIP)**. The objective of this 15-year, multi-track programme is to enable community health by driving innovation in healthcare, to benefit and enhance the health of our patients and the population we serve.

Since its inception, the programme has introduced five tracks, which support projects across areas in **Strategic Training, Innovation, Community Enabling, Strategic Innovation** and **Strategic Research**. The programme has received more than \$24 million and supported more than 160 projects to date. Some of the latest projects are highlighted in this report.

## Track 1: Strategic Training

### FY22 CHI Fellowship

Building on the success of the inaugural collaboration with the University of Salford (UK) in 2021, the second CHI Fellowship programme in 2022 welcomed a total of 15 participants.

Among them, nine individuals from TTSH (funded by NTF HIP), five from Thailand's National Health System and one research student from South Korea.

By January 2023, nine graduates of the TTSH Fellowship Programme had already embarked on innovation projects, further demonstrating the programme's effectiveness and its ability to foster meaningful outcomes.

### Graduate Programme

Ms Alexia Chua, a TTSH staff, has been awarded the opportunity to undergo the Masters of Clinical Investigation programme at the National University of Singapore. Under the programme, she would implement a research framework focused on utilising and analysing existing and future treatment data, to enhance patient outcomes in the practice of Traditional Chinese Medicine (TCM).



## Track 2: Innovation

### **Protective mask/hood over the patient for Aerosol Generating Scope Procedures (AGP)**



This project aimed to create a novel protective device that prioritises ease of use and patient comfort, enabling the safe implementation of AGP in routine clinical settings. The final prototype is used in the ENT clinic, demonstrating positive results. Compared to situations where no mask is worn, the final prototype achieved a 489% reduction in the rate of rise of cumulative particle counts. Furthermore, when compared to the usage of a standard surgical mask, there was a 184% reduction. The feedback from surveyed end-users was positive, with over 90% expressing a heightened sense of safety when using the device.

### **Project CHAT-MI: Caregiver mastery-burden Hybrid Assessment Tool – Matrix of Interventions**

This study aimed to redesign the current care model at the memory clinic, focusing on effectively managing patients with dementia by recognising the dual role of the patient and caregiver. This was achieved through the novel assessment tool known as Caregiver Mastery Burden Hybrid assessment tool-matrix of interventions. 80% of caregivers found the screening tool easy to comprehend.

Clinicians valued the screening tool as it facilitated the early identification of caregivers at risk and matching interventions, which allowed prompt and appropriate allocation of treatment resulted in improved outcomes for patients and caregivers. With such positive outcomes, there is significant potential for the adaptation and scaling of the matrix in other settings that involve extensive caregiver interaction, such as geriatric falls clinic and in-patient settings.



# Ng Teng Fong Healthcare Innovation Programme

## Track 3: Community Enabling

### **Validation of Lattice Structural Properties of 3D Printed Insoles for Management of Diabetic Foot Ulcers Through Mechanical Bench Testing**

Through a collaboration between Tan Tock Seng Hospital, Skin Research Institute of Singapore, and EOS Singapore, this project aims to develop a specialised solution for patients with Diabetic Foot Ulcer (DFU)s. The objective is to create a single-layer multi-density 3D printed insole that effectively alleviates pressure in DFU cases. Using additive manufactured thermoplastic polyurethane (TPU), this one-year project serves as an initial proof of concept for constructing custom offloading insoles tailored to the needs of DFU patients.

## Track 4: Strategic Innovation

### **Wards without Walls (WoW)**

WoW is the next phase of TTSH's inpatient care transformation journey. This initiative re-evaluates the existing patient care model and expands it beyond the hospital. The goal is to empower our patients and caregivers to take charge of their care journey, ensuring a seamless transition from the hospital to the community.

A total of seven projects have been funded under NTF HIP. Out of these, five projects have commenced the implementation of Proof-of-Concept (POC) initiatives. One notable project, the Doctor Nurse Allied-Health and Pharmacy Hands-Free Communication (DNA VAC), introduces a voice-activated communications technology that allows virtual multi-disciplinary ward rounds and empowers clinicians to make timely and informed decisions.

# Ng Teng Fong Healthcare Innovation Programme

## Track 5: Strategic Research

### **Personalised Cardiometabolic Risk Management: Predict to Prevent**

This programme was awarded in September 2022 and aimed to perform patient-centred early risk characterisation. The primary objectives were to develop effective and efficient methods for accessing vascular health and optimise therapeutic strategies to prevent disease and maintain vascular health.





# Fundraising & Community Support

## #WELOVESINGAPOREHAWKERS COFFEE TABLE BOOK



**Campaign period: 1 April 2022 to 31 March 2023**

**Amount raised: \$848,145\*\***

The Singapore Hawker Culture was successfully listed on the UNESCO Representative List of the Intangible Cultural Heritage of Humanity in December 2020. But the sudden appearance of COVID-19 in early 2020 had impacted hawkers' livelihood. For this, the TTSH Community Fund had recognise the hard work and contribution of Singapore's hawkers and celebrate the hawker heritage through a fundraiser book.



The **#WeLoveSingaporeHawkers** is a collection of photos, anecdotes, illustrations and interviews contributed by more than 30 renowned local writers, photographers and illustrators.

Through this project, we raised funds for **IWanttoGoHome (IWGH)** and **Help Me Go Home** Programmes which provides financial assistance to needy patients to be discharged from the hospital to go home.

**#WeLoveSingaporeHawkers** presents everything about hawkers' past, present and future, through the perspectives of hawkers, customers and suppliers.

\*\*Amount raised excludes matching from Toteboard Enhanced Fundraising Programme



Contributors' Appreciation Event held on 8 December 2022



# Fundraising & Community Support

## PROJECT HONGBAO 2023



**Campaign period: 9 January to 3 February 2023**

**Amount raised: \$36,868**



Project Hongbao is an annual festive fundraiser that provides primary school students with an opportunity to showcase their creativity by designing their own Lunar New Year red packets. In the spirit of generosity, these students also donated a portion of their 'Hongbao money' or pocket money to support our needy patients.

We are grateful for the ongoing support of the following schools, some of which have been dedicated supporters of Project Hongbao since its inception: Admiralty Primary School, Bukit Panjang Primary School, Evergreen Primary School, Fern Green Primary School, Greenridge Primary School, Maha Bodhi School, Pasir Ris Primary School, Tampines Primary School, West Grove Primary School, Xingnan Primary School, Xishan Primary School, and Zhenghua Primary School.

## EMPOWERING HEARTS



**Campaign period: 1 to 30 November 2022**

**Amount raised: \$36,281**



Sister Lee Sow Fong, a Senior Nurse Manager at Tan Tock Seng Hospital, undertook a personal challenge to complete the Ironman 70.3 Western Australia Triathlon. The race involves a 70.3 distance of swimming (1.9 km), cycling (90 km) and running (21 km) in Busselton, Western Australia, with a goal to finish within 8 hours.

60% of the funds were raised for Help Me Go Home which subsidises the high cost of breathing machines that can cost between \$6,000 and \$22,000, while 40% funds went to Programme for All Inclusive Care for the Terminally Ill (PACT), which provides interim funding for terminally ill patients and their families.

# Fundraising & Community Support

## FUN WITH POTTERY



**Campaign period: 11 to 20 November 2022 & 13 to 20 January 2023**  
**Total amount raised: \$4,951**



Arudio Ceramic, our valued and longstanding community partner, has been a steadfast supporter of our cause. They held the 'Art of Giving' exhibitions at our TTSH Atrium, which have become an annual tradition. During these exhibitions, talented ceramist showcases their pottery pieces and a portion of the proceeds from the sales is donated to our charity.

## NURSES DAY 2022



**Campaign period: 20 June to 15 July 2022**  
**Amount raised: \$22,999**



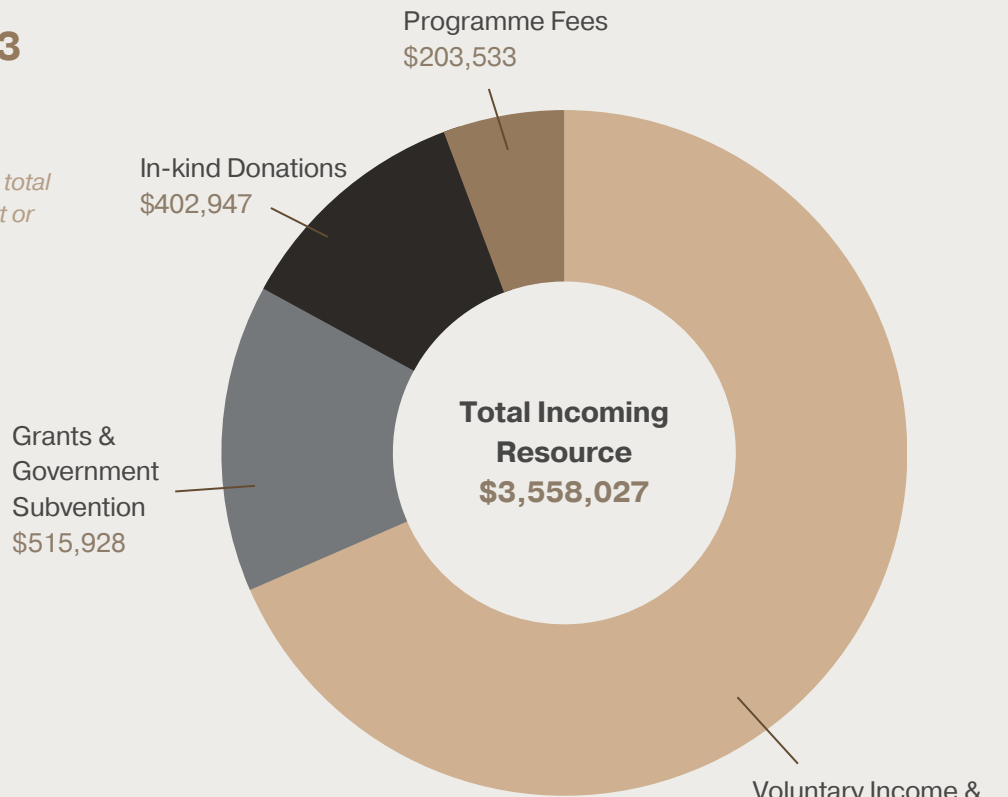
In an endearing tribute to Nurses Day, the Nurses' Day Organising Committee at TTSH spun a creative twist to raise funds for our needy patients. A charity auction was organized, featuring exclusive items from limited-edition TTSH Lego sets and captivating acrylic peacock canvas paintings to handmade jewellery sets adorned with semi-precious stones.

The spirit of giving extended beyond the auction. At the Mama Booth Charity Sale, surplus textile used for making the nursing uniforms found new life as tote bags, cushion covers and other merchandise. These were sold to raise funds for our needy patients.

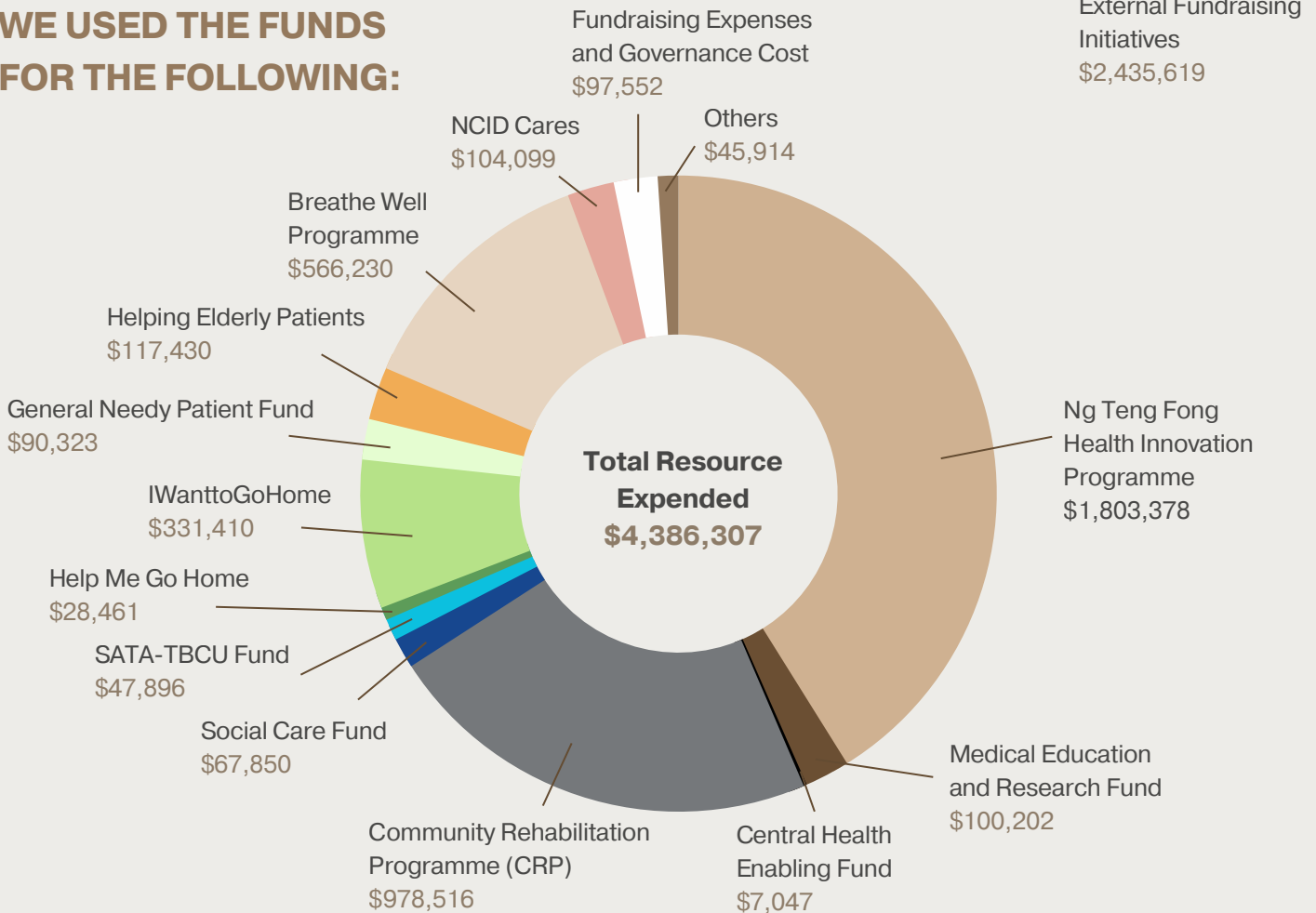
# Financial Highlights

## WE SUPPORTED 2153 BENEFICIARIES

*Represent unique cases, and each beneficiary is included only once in the total count, regardless of how much support or assistance the beneficiary received.*



## WE USED THE FUNDS FOR THE FOLLOWING:





# Statement of Financial Position

For the Financial Year Ended 31 March 2023

<b>ASSETS</b>	<b>2023</b>	<b>2022</b>
	<b>\$</b>	<b>\$</b>
Property, plant and equipment	5,883	11,013
Other investments	34,764,911	33,695,595
<b>Non-current Assets</b>	<b>34,770,794</b>	<b>33,706,608</b>
Cash and cash equivalents	40,757,045	43,467,340
Other assets	1,611,123	2,014,070
Interest receivables	420,342	38,554
Prepayments	744	293
<b>Current Assets</b>	<b>42,789,254</b>	<b>45,520,257</b>
<b>Total Assets</b>	<b>77,560,048</b>	<b>79,226,865</b>
<b>LIABILITIES</b>		
Trade and other payables	1,555,130	1,058,285
Deferred income	1,611,123	2,014,070
Grant received in advance	6,974	12,102
<b>Current and Total Liabilities</b>	<b>3,173,227</b>	<b>3,084,457</b>
<b>Net Assets</b>	<b>74,386,821</b>	<b>76,142,408</b>
<b>FUNDS</b>		
General Fund	8,302,725	7,887,863
<b>Unrestricted Fund</b>	<b>8,302,725</b>	<b>7,887,863</b>
Needy Patients Fund	5,600,897	5,124,107
Medical Education Fund	2,043,263	1,946,989
Medical Research Fund	1,094,632	1,149,675
Patient Care Fund	4,125,586	3,949,549
Central Health Enabling Fund	3,951,773	3,915,918
Ng Teng Fong Healthcare Innovation Programme	49,267,945	52,168,307
<b>Restricted Fund</b>	<b>66,084,096</b>	<b>68,254,545</b>
 <b>TOTAL FUNDS</b>	 <b>74,386,821</b>	 <b>76,142,408</b>

# Statement of Comprehensive Income

For the Financial Year Ended 31 March 2023

INCOMING RESOURCES	RESTRICTED FUNDS		UNRESTRICTED FUNDS	
	NG TENG FONG HEALTHCARE INNOVATION PROGRAMME	MAIN FUND	GENERAL FUND	TOTAL FUNDS
<b>2023</b>	<b>\$</b>	<b>\$</b>	<b>\$</b>	<b>\$</b>
Voluntary income	-	786,316	387,445	1,173,761
Income from fundraising activities	-	1,036,757	225,101	1,261,858
Deferred income - in-kind donation	-	402,947	-	402,947
Grant income	-	209,435	-	209,435
Government subvention	-	306,493	-	306,493
Incoming resources from charitable activities	-	203,294	239	203,533
<b>Total Incoming Resources</b>	<b>-</b>	<b>2,945,242</b>	<b>612,785</b>	<b>3,558,027</b>
<b>RESOURCES EXPENDED</b>				
Cost of generating funds:				
Fundraising expenses	-	(1,225)	(59,350)	(60,575)
Charitable activities	(1,803,378)	(2,485,377)	-	(4,288,755)
Governance costs	(135)	(4,952)	(31,890)	(36,977)
<b>Total Resources Expended</b>	<b>(1,803,513)</b>	<b>(2,591,554)</b>	<b>(91,240)</b>	<b>(4,386,307)</b>
Finance (cost)/income	(1,096,849)	180,225	(10,683)	(927,307)
<b>Net incoming (outgoing) resources, representing total comprehensive income/(loss) for the year</b>	<b>(2,900,362)</b>	<b>633,913</b>	<b>510,862</b>	<b>(1,755,587)</b>
<b>2022</b>	<b>\$</b>	<b>\$</b>	<b>\$</b>	<b>\$</b>
Voluntary income	-	1,532,087	290,640	1,822,727
Income from fundraising activities	-	200,610	343,637	544,247
Deferred income - in-kind donation	-	331,304	-	331,304
Grant income	-	221,876	-	221,876
Government subvention	-	220,047	-	220,047
Incoming resources from charitable activities	-	145,193	-	145,193
<b>Total Incoming Resources</b>	<b>-</b>	<b>2,651,117</b>	<b>634,277</b>	<b>3,285,394</b>
<b>RESOURCES EXPENDED</b>				
Cost of generating funds:				
Fundraising expenses	-	-	(6226)	(6,226)
Charitable activities	(1,507,975)	(2,107,356)	-	(3,678,331)
Governance costs	(156)	(4,303)	(13,835)	(18,294)
<b>Total Resources Expended</b>	<b>(1,571,131)</b>	<b>(2,111,659)</b>	<b>(20,061)</b>	<b>(3,702,851)</b>
Finance (cost)/income	(504,101)	30,181	14,942	(458,978)
<b>Net incoming (outgoing) resources, representing total comprehensive income/(loss) for the year</b>	<b>(2,705,232)</b>	<b>569,639</b>	<b>629,158</b>	<b>(876,435)</b>

# Reserves Policy

	As at 31 Mar 2023 (\$)	As at 31 Mar 2022 (\$)	% Increase/ (Decrease)
Unrestricted Funds (Reserve)	8,302,725	7,887,863	5.26
Restricted / Designated Funds Main Fund	16,816,151	16,086,238	4.54
Total Fund (Main Fund) (A)	25,118,876	23,974,101	4.78
Annual Operating Expenditure (Excludes fundraising expenses and expenses incurred from NTF)	2,515,306	1,930,000	30.33
Ratio of Reserves to Annual Operating Expenditure for Main Fund	3.30	4.09	(19.29)
Ng Teng Fong Healthcare Innovation Programme (B)	49,267,945	52,168,307	(5.56)
<b>Total Funds (A) + (B)</b>	<b>74,386,821</b>	<b>76,142,408</b>	<b>(2.31)</b>

*For the accompanying accounting policies and explanatory notes, please refer to the financial statements on our website.*

TTSH Community Fund targets to maintain a reserve level of at least three years. The purpose of the reserve policy serves to provide clarity in the management of our funds and importantly, ensure we have enough resources to continue supporting our core programmes, especially in crisis. TTSH Community Fund does not have paid staff. Major operating expenses such as administrative, manpower and operating costs are supported by Tan Tock Seng Hospital Pte Ltd.

Our current year unrestricted funds (reserves) is at \$8.3m.

The fund may selectively invest its reserves subject to:

- (a) Approval from the Board;
- (b) TTSH's/ NHG's financial policies and practices; and
- (c) MOHH's Common Investment Mandate and policy.

The Board reviews the amount of reserves on a yearly basis to ensure that there are adequate funds to support key charitable programmes and operational needs.



# List of Related Entities

<b>NAME OF ENTITY</b>	<b>UEN</b>	<b>RELATIONSHIP</b>
MOH Holdings Pte Ltd	198702955E	Intermediate Holding company
National Healthcare Group Pte Ltd	200002150H	Intermediate Holding company
Tan Tock Seng Hospital	199003683N	Intermediate Holding company
National Healthcare Group Fund	201623926M	Related Company
National Skin Centre Health Fund	202010012C	Related Company
Woodbridge Hospital Charity Fund	201940371M	Related Company
Alexandra Health Fund Ltd	201427909W	Related Company
Woodlands Health Fund Ltd	202141418Z	Related Company
Geriatric Education and Research Institute Ltd	201502154R	Related Company
Alexandra Health Pte Ltd	200717564H	Related Company
WoodlandsHealth Pte Ltd	201426682D	Related Company
Yishun Community Hospital Pte Ltd	201333346W	Related Company
Admiralty Medical Centre Pte Ltd	201618776K	Related Company
National Primary Care Pte Ltd	201228999C	Related Company
Central-North Primary Care Network Pte Ltd	201229016M	Related Company
Hougang Family Medicine Clinic Pte Ltd	201526353R	Related Company

*Note: All entities under MOH Holdings (MOHH) and National Healthcare Group (NHG) are also related companies of the Charity.*

# Governance Policies



## Conflict of Interest Policy

Our Charity has established procedures to manage potential conflicts of interest. Board members and staff are required, on an annual basis, to declare any potential conflict of interest that may interfere with their function or employment in the Charity.



## Personal Data Protection Policy

We have put in place policies and procedures for the collection, use, disclosure and management of personal data in accordance with the Personal Data Protection Act (PDPA). We also have administrative, physical and technical measures to safeguard personal data in our possession and/or under our control. Our Charity was awarded the Data Protection Trustmark (DPTM) certification in January 2019 and was re-certified in January 2022.



## Other Policies & Procedures

Our Charity has the following policies and procedures, which are reviewed and updated annually and/or whenever there are changes.

- Enterprise Risk Management^
- Finance
- Fundraising
- Human Resource^
- Information Technology^
- Whistle-blowing^

^ In accordance with Tan Tock Seng Hospital's and/or National Healthcare Group's policies, which are available on the TTSH / NHG Intranet and/or website.

### Auditor

- Ernst & Young LLP

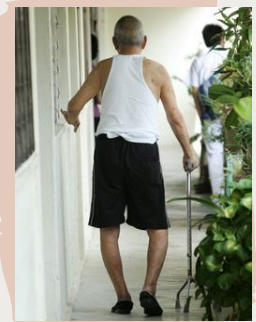
### Bankers

- Australia and New Zealand Banking Group Limited
- DBS Bank Ltd
- Oversea-Chinese Banking Corporation Limited
- Sumitomo Mitsui Banking Corporation
- United Overseas Bank Limited

### Fund Managers

- Fullerton Fund Management Company Ltd
- UOB Asset Management Ltd

# How You Can Help



We feel blessed to have a wonderful community of supporters journeying with us on our mission. Our goal is simple: to improve the quality of life for our patients and add years of healthy life.

As a Charity with limited resources, our patient-centered programmes rely on generous contributions from both corporate and individual donors. Every act of giving sends ripples of change through the lives of those most in need — particularly the elderly, the needy sick, the physically challenged, and more — lending our patients strength to embrace greater independence.

## Make an Online Donation

Every contribution is precious.



[for.sg/ttshcf-giving](https://for.sg/ttshcf-giving)

## Make a Cheque Donation

To 'TTSH Community Fund' and write your full name, full NRIC (for tax exemption) and mailing address at the back of the cheque.

### Mailing Address:

TTSH Community Fund  
Tan Tock Seng Hospital  
11 Jalan Tan Tock Seng  
Singapore 308433



**Registered Address**

**Tan Tock Seng Hospital**

**11 Jalan Tan Tock Seng Singapore 308433**

**Tel: 6357 2500 | Email: [donate@ttsh.com.sg](mailto:donate@ttsh.com.sg)**

** [ttshcommunityfund](https://www.facebook.com/ttshcommunityfund)**

**Website: [www.ttsh.com.sg/about-ttsh/ttsh-community-fund](http://www.ttsh.com.sg/about-ttsh/ttsh-community-fund)**

**Date Incorporated as a Public Company Limited by Guarantee: 8 January 2014**

**Current IPC period: 20 July 2021 to 19 July 2024**

TTSH Community Fund owns the copyright for this annual report and any reproduction of it must be authorised.