

EXPLORE HEALTHCITY NOVENA DISCOVERY TRAIL ON FOOT!

JALAN TAN TOCK SENG ROUTE

Experience the discovery trail on foot in HealthCity Novena. This healthcare hub has more than health services to offer, bringing you on a time travel to imagine what Novena looks like through the century.



3000 STEPS



45 MINS

A good mix of historic and modern buildings. This route will bring you to places that connects the origins of healthcare to the future.



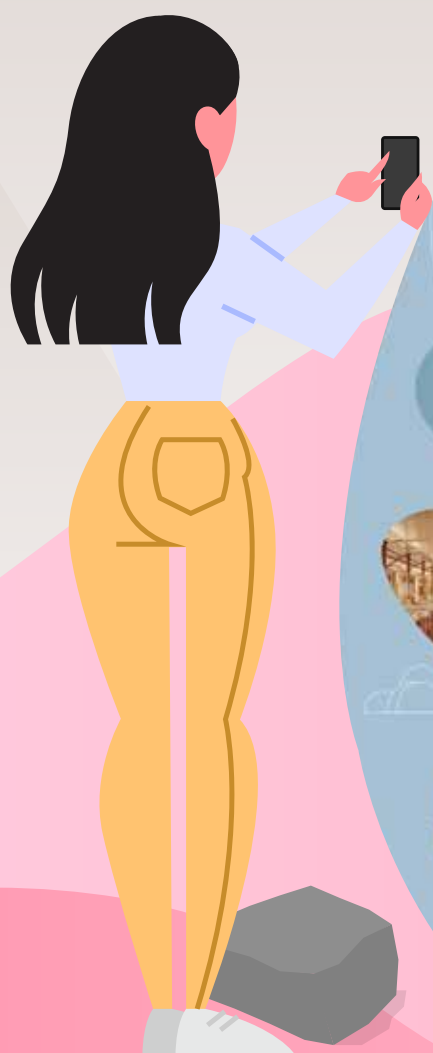
FIRST STOP
PAVILION WARDS

PAVILION WARDS

HELPFUL TIP!

Keep a look out for the heritage yellow flame tree!

Location:
Jalan Tan Tock Seng



MILESTONE IN INNOVATION
HealthCity
DISCOVERY TRAIL

PAVILION WARDS

Through the years, the remaining wards continued to take on different roles such as libraries, museums, and medical records, and being gradually phased out in 1999.





BREAKING NEW GROUNDS THEN AND NOW
HealthCity
DISCOVERY TRAIL

From a former sugar plantation at Bedok Road, where swampy waterlogged grounds were deemed unsuitable for the thousands of soldiers and for the thousands of British and Indian troops in the hilly Kluang area in 1908 where these Pavilion Wards are today.

The open concept wards, and the high-rise wards, featured a long central aisle and two rows of beds for easier supervision, while high ceilings supported by metal frames provided natural lighting and ventilation to reduce infection.

This ground-breaking initiative was integral in helping patients to recover from Tuberculosis and Dysentery. Over the years, this place has been occupied by TGH and the C1 Housing Home. It continues to serve public healthcare needs even until today.



Carry on your journey into the future and see HealthCity unfold on the mobile trail via this QR code.

PAVILION WARDS

SPOT ONE OF THE MAJESTIC HERITAGE TREES HERE!

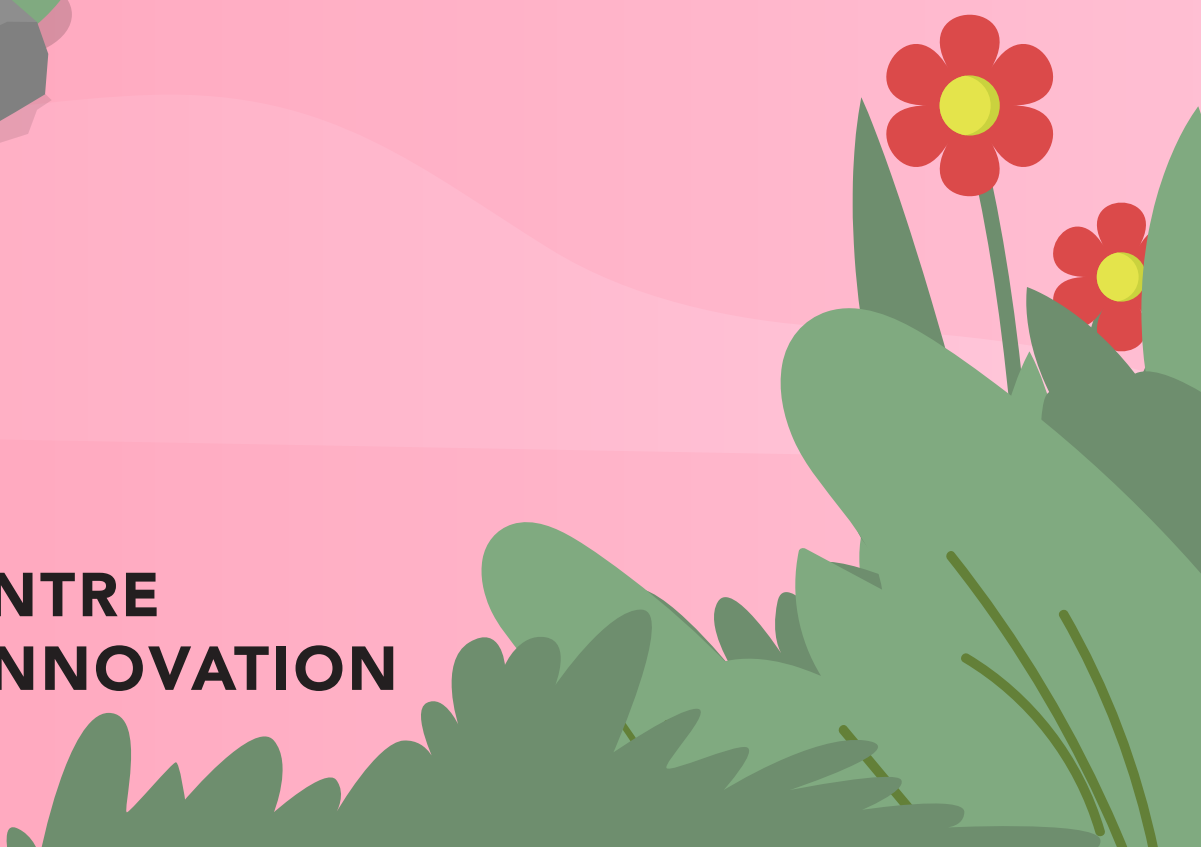
During the flowering season, the yellow flame trees set grace the ground around it with its brilliant yellow flowers.

You can easily identify the yellow flame tree (Delonix regia) in Malay, the name of the flame tree after lights in the evening.

More info on our HealthCity Discovery Trail app.



NEXT STOP
NG TENG FONG CENTRE
FOR HEALTHCARE INNOVATION

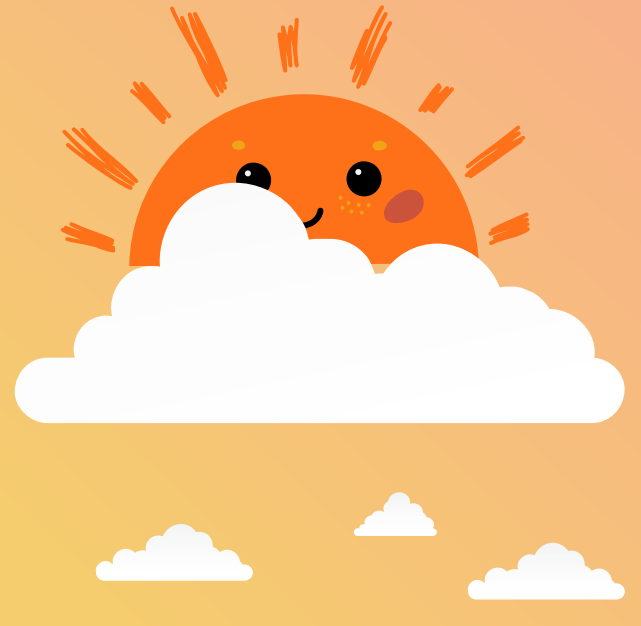


NG TENG FONG CENTRE FOR HEALTHCARE INNOVATION

LEVEL 1

HELPFUL
TIP!

Watch how ideas
transform into
care services and
products



L1, CHI Living Lab
(CHILL)



NEXT STOP
NG TENG FONG CENTRE
FOR HEALTHCARE INNOVATION

NG TENG FONG CENTRE FOR HEALTHCARE INNOVATION

LEVEL 2

HELPFUL TIP!

We have the best sunset view for you here!

Locations:
L2, Viewing deck outside the halls



NEXT STOP
**NATIONAL CENTRE FOR
INFECTIOUS DISEASES**

NATIONAL CENTRE FOR INFECTIOUS DISEASES

HELPFUL TIP!

Visit The NCID Gallery to learn more about NCID's history.

Location:
L1, NCID



FROM MIDDLETON HOSPITAL TO CDC

BEFORE 1913



1914-1919



1913

Singapore's Fight Against Infectious Diseases: Then, Now and in the Future

NCID and its predecessors – the Communicable Disease Centre and Middleton Hospital – have protected the people of Singapore from infectious diseases since 1913. Find out more about the major events in Singapore's fight against infectious diseases in this timeline.



NEXT STOP
**NATIONAL CENTRE FOR
INFECTIOUS DISEASES**

NATIONAL CENTRE FOR INFECTIOUS DISEASES

Spot this marker located outside NCID, along Jalan Tan Tock Seng.



NEXT STOP
LEE KONG CHIAN
SCHOOL OF MEDICINE

LEE KONG CHIAN SCHOOL OF MEDICINE

HELPFUL
TIP!

Visit the
LKC Medicine to
learn about the
school's early days
and stories.

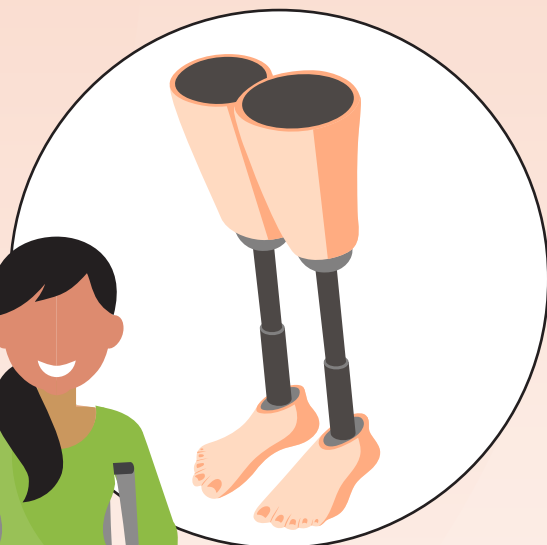
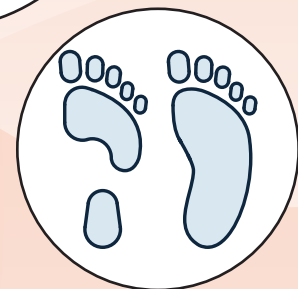
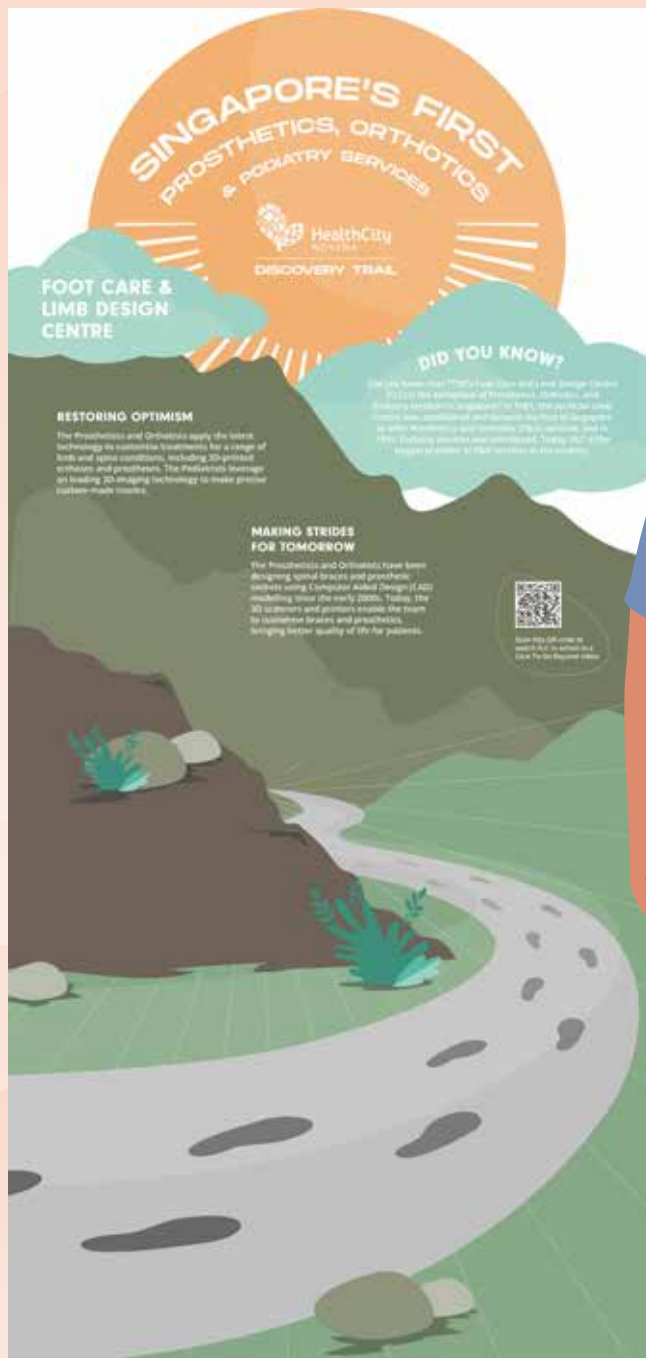


NEXT STOP
**FOOT CARE AND
LIMB DESIGN CENTRE**

FOOT CARE AND LIMB DESIGN CENTRE

Behind-the-scenes:
This is where
prosthetic and
orthotic devices
are designed
and made.

HELPFUL
TIP!



NEXT STOP
NATIONAL SKIN CENTRE

NATIONAL SKIN CENTRE

**HELPFUL
TIP!**

Watch National Skin Centre grow from Singapore's first dermatological institution to one of the largest in the world!

