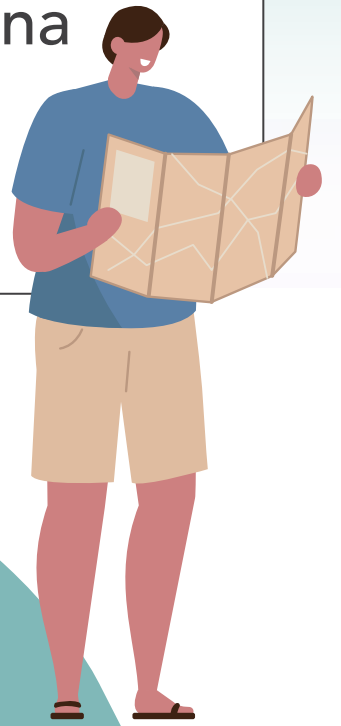


EXPLORE HEALTHCITY NOVENA DISCOVERY TRAIL ON FOOT!

MOULMEIN ROUTE



Experience the discovery trail on foot in HealthCity Novena. This healthcare hub has more than health services to offer, bringing you on a time travel to imagine what Novena looks like through the century.



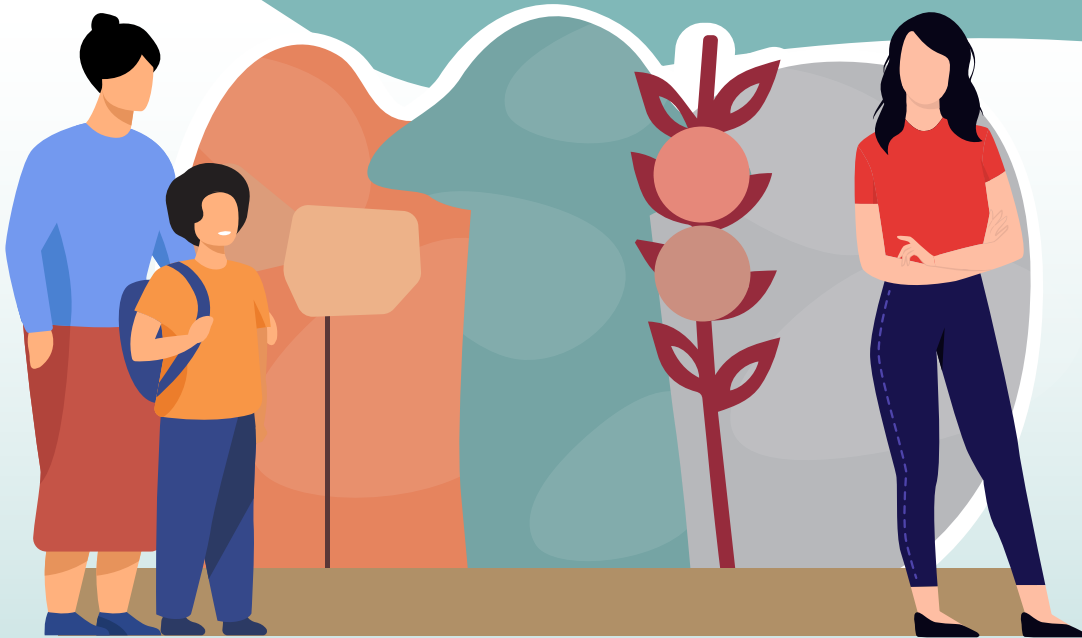
Tan Tock Seng Hospital

TTSH Annex 2

Communicable Disease Centre 2

Tuberculosis Control Unit

Contact Clinic



2000 STEPS



30 MINS

This route is a more weather-friendly where most of the trail is sheltered. The last stop to the beautiful old dame (TBCU) is the highlight to this route.



FIRST STOP
TAN TOCK SENG HOSPITAL

TAN TOCK SENG HOSPITAL

HELPFUL TIP!

Visit the TTSH Heritage Museum to learn more about the hospital's history.

HealthCity Novena Photo Gallery
L1 & B1 HealthCity Link



Coming Together
L1 Ward Block - Taxi Stand



SARS Tribute Wall
L1 Ward Block



Heritage Museum



TTSH Heritage Museum
L1, TTSH Medical Centre



NEXT STOP
NATIONAL NEUROSCIENCE INSTITUTE



NATIONAL NEUROSCIENCE INSTITUTE

HELPFUL TIP!

Learn more about common brain, spine, nerves and muscles conditions here. Some tips to prevent and managing them.

Location:
NNI, L1 - outside the Neuroscience Clinic



**NEXT STOP
REN CI COMMUNITY HOSPITAL**

REN CI COMMUNITY HOSPITAL

HELPFUL TIP!

Visit the art wall at Ren Ci Linkway for seasonal art display and exhibition.

Location:
Ren Ci Community Hospital, L1

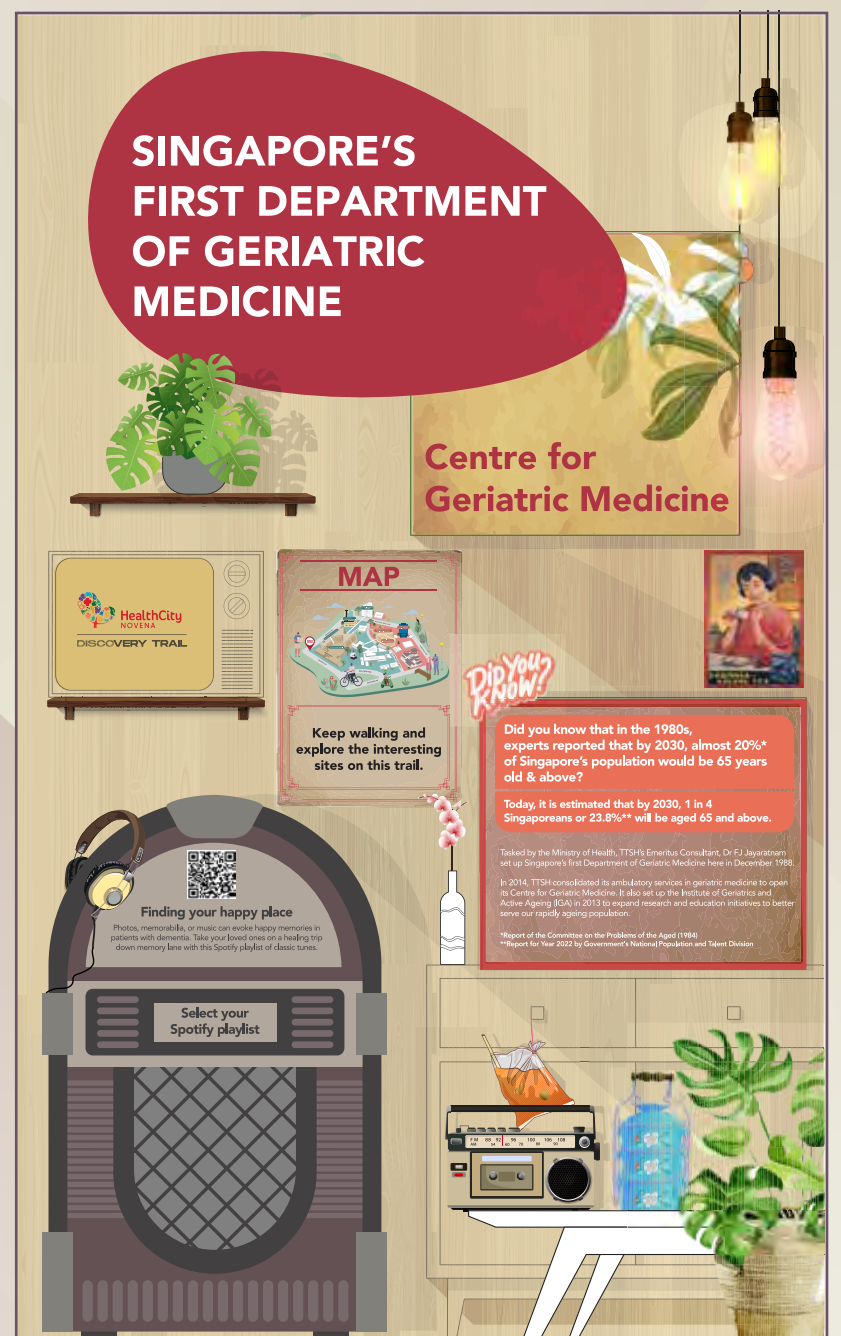


NEXT STOP
TTSH ANNEX 2

TTSH ANNEX 2

HELPFUL TIP!

Check out the oldies goldies music playlist that we have here for our golden age patients and visitors!



NEXT STOP
**COMMUNICABLE DISEASE
CENTRE 2**

COMMUNICABLE DISEASE CENTRE 2

HELPFUL TIP!

This is the last standing 6-storey ward block from the 1950s. Spot the vintage mosaic tiles and window frames.



NEXT STOP
TUBERCULOSIS CONTROL UNIT

TUBERCULOSIS CONTROL UNIT

HELPFUL TIPS!

Photo spot: Take a shot with the iconic heritage building as your background.

CELEBRATING OUR BELOVED CENTENARIANS



TUBERCULOSIS CONTROL UNIT

Connect with more than 100 years of history through two of its most distinguished icons.



CENTRAL TO THE COMMUNITY



TUBERCULOSIS CONTROL UNIT

This beautiful European-style building, once home to a wealthy merchant in the 1920s, was converted to the Tuberculosis Control Unit (TBCU) in 1948. TBCU (Block 144) and the adjacent Contact Clinic (Block 142) are two of the heritage buildings under the conservation scheme by Urban Redevelopment Authority (URA).

By 2030, it will metamorphose into Central Park, an oasis amid the bustle of Novena. Step back in time at the new TTSH Heritage Museum, or follow an elevated walkway up alongside the treetops to unwind.



HealthCity Novena
Discovery Trail