

# Types of Hearing Aids



## **Behind-the-Ear (BTE)**

- Suitable for mild to profound hearing loss (powerful)
- Worn behind the ear with a connecting custom-fit ear mould in the ear
- Bigger in size, easier to handle, full range of functionality



## **Receiver-in-Canal (RIC)**

- Suitable for mild to severe hearing loss
- Worn behind the ear with a connecting receiver and soft dome in the ear
- Smaller and lighter than BTE, most comfortable, full range of functionality
- Flexibility to change the receiver's power according to the degree of hearing loss



## **In-the-Ear (ITE)**

- Suitable for mild to severe hearing loss
- Largest custom hard-shell hearing aid worn in the ear, visible from outside



## **In-the-Canal (ITC)**

- Suitable for mild to severe hearing loss
- Custom hard-shell hearing aid worn in the canal, visible from outside



## **Completely-in-Canal (CIC)**

- Suitable for mild to severe hearing loss
- Very small custom hard-shell worn in the canal, less visible from outside
- Runs on small batteries with short lifespan, limited functionality due to size



## **Invisible-in-Canal (IIC)**

- Suitable for mild to moderate hearing loss (least powerful)
- Smallest custom hard-shell worn deep in the canal, not visible from outside
- Runs on small batteries with short lifespan, limited functionality due to size



Scan the QR code to access more health information on TTS Health Library  
DEPARTMENT OF OTORHINOLARYNGOLOGY (ENT)  
PECC-ENT-ED-2023-1569-v1

In Collaboration with:



Organised by:





# 助听器的类型



## **耳背式 Behind-the-Ear (BTE)**

- 适用于轻度至非常严重听力损失者 (功率比较高)
- 佩戴在耳廓后的助听器，通过细声管连接到外耳道量耳定制的耳模
- 体积较大，比较容易保养和维护，拥有全面的功能



## **受话器外置式 Receiver-in-Canal (RIC)**

- 适用于轻度至严重听力损失者
- 佩戴在耳廓后的助听器，通过细小的受话器和软耳塞连接到外耳道
- 体积比耳背式更小更轻，感觉比较舒适，也拥有全面的功能
- 可根据不同的听力损失更换不同功率的受话器



## **耳内式 In-the-Ear (ITE)**

- 适用于轻度至严重听力损失者
- 佩戴在外耳道体积最大的量耳定制型助听器，从外面可见



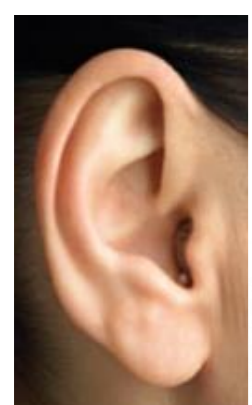
## **耳道式 In-the-Canal (ITC)**

- 适用于轻度至严重听力损失者
- 佩戴在外耳道内的量耳定制型助听器，从外面隐约可见



## **深耳道式 Completely-in-Canal (CIC)**

- 适用于轻度至严重听力损失者
- 体积非常小，佩戴在外耳道内的量耳定制型助听器，从外面依稀可见
- 使用寿命较短的小电池，因为体积小而功能有限



## **隐形深耳道式 Invisible-in-Canal (IIC)**

- 适用于轻度至中度听力损失者 (功率比较低)
- 体积最小，深藏在耳道内的量耳定制型助听器，从外面不可见
- 使用寿命短的小电池，因为体积小而功能有限



Scan the QR code to access more health information on TTS Health Library  
DEPARTMENT OF OTORHINOLARYNGOLOGY (ENT)  
PECC-ENT-ED-2023-1569C-v1

In Collaboration with:



Organised by:

