

Breast Surgical Services

We accept referrals for



- Chemotherapy
- Radiotherapy
- Plastic surgery procedures (Breast augmentation or reduction, Gynaecomastia surgery)
- Physiotherapy services for Lymphoedema post surgery

Endocrine Surgical Services

We accept referrals for



- Neck Lumps Assessment
- Parathyroid Diseases
- Treatment for Thyroid Cancer and Benign Thyroid conditions
- Adrenal, Thyroid Nodules, and Cervical Lymph Nodes workup

DEPARTMENT OF
GENERAL SURGERY

BREAST AND ENDOCRINE SURGERY SERVICES

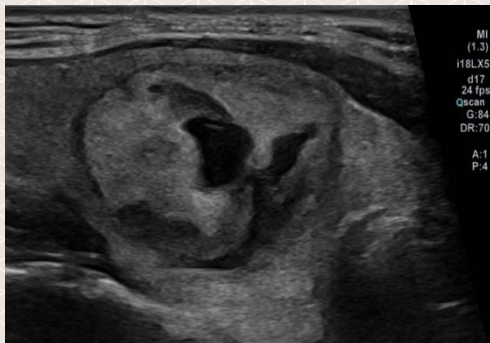


ENDOCRINE SURGICAL SERVICES

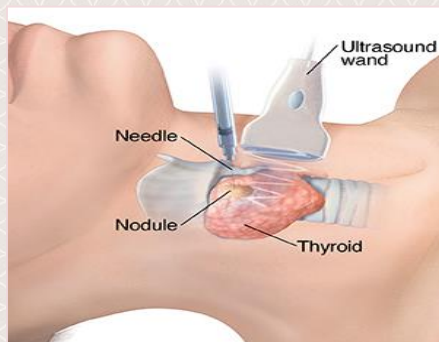
We offer treatment for head and neck endocrine conditions which involve the thyroid and parathyroid glands.

The team works closely with the Endocrine Department as well as other specialties such as Renal. Together, we provide seamless care for our patients with endocrine conditions requiring surgery.

We utilise techniques such as ultrasound guided fine needle aspiration to perform biopsy for nodules and tumors in the neck and thyroid areas. This ensures rapid and accurate removal of tissue sample from patients.



Ultrasound Image of a Thyroid Nodule



Fine Needle Aspiration of the Neck and Thyroid Nodules

OUR DOCTORS



ADJ A/PROF PATRICK CHAN MUN YEW
 Clinical Director (The Breast Clinic)
 Breast and Endocrine Surgery Services
 Department of General Surgery
 MBBS, FRCS (Edin), FAMS



DR JULIANA CHEN JIA CHUAN
 Head and Senior Consultant
 Breast and Endocrine Surgery Services
 Department of General Surgery
 MBBS (Singapore), MRCS (Edin),
 Mmed (Surgery), FRCSEd (General Surgery),
 FAMS, Grad Dip Palliative Medicine (NUS)



DR TAN ERN YU
 Senior Consultant
 Breast Surgery Services
 Department of General Surgery
 Clinician Scientist
 Institute of Molecular and Cell Biology,
 A*STAR
 MBBS, FRCSEd (Gen),
 Mmed (Surgery), DPil (Oxon)



DR GOH MUI HENG
 Consultant
 Breast Surgery Services
 Department of General Surgery
 MBBS, MRCS (Edin), Mmed (Surgery),
 FRCS (Edin)



DR JUNICE WONG SHI HUI
 Consultant
 Endocrine Surgery Services
 Department of General Surgery
 MBBS (Singapore), MRCS (Edinburgh), Mmed
 (Surgery), FRCSEd (General Surgery)

BREAST SURGICAL SERVICES

We provide a comprehensive diagnostic, treatment and support services for patients with benign and malignant breast diseases. Our multidisciplinary team of surgeons, breast care nurses, physiotherapists, and radiologists collaborate to ensure holistic care for our patients.

THE LATEST IN MINIMALLY INVASIVE REMOVAL OF BREAST LUMPS, SENTINEL LYMPH NODE BIOPSY AND FACILITIES FOR TISSUE AND IMPLANT RECONSTRUCTION AFTER MASTECTOMY.



OUR SERVICES

- Breast Screening
- Minimally Invasive Procedures (Mammotomy)
- Diagnostic Surgery (Excision of breast lump)
- Treatment surgery (Mastectomy and wide excision/lumpectomy)
- Breast Tissue and Implant Reconstruction
- Counselling by Breast Care Nurse
- Breast Augmentation
- Breast Lift (Mastopexy)
- Breast Reduction (Men and women)
- Post-operation Treatment
- Survivorship Care