

## 第4步



请在提交后等待**确认页面**的显示。

您已完成所需支持文件的提交。谢谢您。

我们在审核您的文件后会与您联系。否则，请按时出席您预定的面谈（如有）。



扫描此二维码以了解更多有关《医疗费用资助事项》的信息。



扫描此二维码提交您的《经济援助线上申请表》

如有其他疑问，请联系关怀与辅导部门：

**电话：6357 8222**

办公时间：

周一至周五：上午8点至下午5点

周六：上午8点至中午12点

\*我们正逐步转向全数码提交系统，停止接受纸本提交。

\*如需续期申请，您可在现有援助到期前30天内在线上提交申请。

# 经济援助线上申请

## 关怀与辅导部门



## 什么是 PX?

PX 是一个线上平台, 用于提交经济援助所需的文件



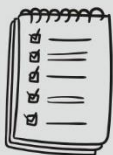
## 谁可以使用 PX?

拥有 Singpass 账户者并在陈笃生医院注册档案的人。



## 何时使用 PX?

当您准备好经济援助申请文件时。



## 需准备事项:

- > Singpass 账户
- > 用于经济援助评估所需的文件

# 提交指南

## 第1步

**Request for Financial Assistance**

You can use this service if you have ever made an appointment with a Medical Social Worker at a partner hospital.

Partner hospitals:

- Singapore General Hospital
- Woodlands Health
- Tan Tock Seng Hospital

Note: Prepare latest bank statements, payslips / CPF / IRAS statements, and any other supporting financial documents for the patient and their family to expedite the application.

Log in with Singpass app

Don't have Singpass app? Download now

扫描二维码并使用 Singpass 登录, 开始申请经济援助。

选择 Tan Tock Seng Hospital (陈笃生医院)

\* 请在开始提交前准备好所有所需文件。

Select a hospital

Choose where you are currently receiving treatment, and need financial assistance:

Tan Tock Seng Hospital

## 第2步

填写表格并上传所需文件。

最大档案大: 10MB

**Update Your Information**

Are you currently married? \*

Yes No

Do you have children? \*

Include step-children and adopted children

Yes No

Do you own a private or commercial property? \*

Yes No

Monthly income (after CPF Deduction) \*

Provide a 3 months average if your income is not fixed

Enter Amount

Do you have other sources of income? \*

What are other sources of income?

**Upload Documents**

Take a photo or screenshot of the following:

- Latest bank statements for you
- Latest payslips / CPF / IRAS statements for you
- Any other supporting financial documents

Choose file or drag and drop here

Maximum file size: 10 MB

Save & Next

## 第3步

输入您的手机号码, 通过 OTP (一次性密码) 进行验证后, 点击“提交申请”。

**Verify Mobile Number**

Mobile Number \*

Enter Mobile Number

Send OTP

**Verify Mobile Number**

6-digit OTP \*

Enter the 6-digit verification code sent to your mobile number via SMS. It is valid for 10 minutes.

Resend code in 20 seconds

Submit Application