

CHALLENGES IN AIRWAY MANAGEMENT

TIPS & TRICKS

18 August 2022, Thursday
6.00 - 7.30pm (SGT/ UTC+8)

PROGRAMME

- 6.00 - 6.05PM** **Opening**
By Dr Chen Xinying
- 6.05 - 6.30PM** **Airway Challenges In Trauma**
By Dr Teo Ying Xin
- 6.30 - 6.55PM** **Techniques & Equipment Employed In Airway Management In Clinical Settings**
By Dr Michelle Leanne Lim
- 6.55 - 7.30PM** **Q&A and Feedback**

PANELLISTS



CHAIRPERSON & MODERATOR
Dr Chen Xinying
Consultant
Department of Anaesthesia
Khoo Teck Puat Hospital



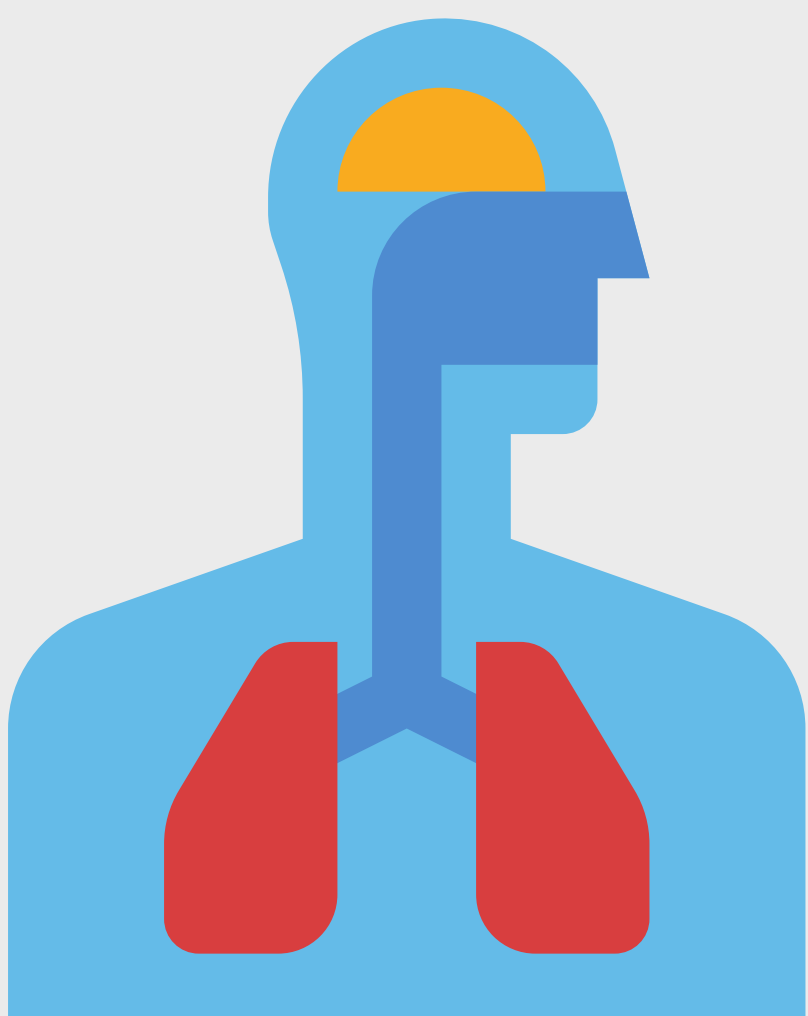
SPEAKER
Dr Teo Ying Xin
Senior Consultant
Department of Emergency Medicine
Ng Teng Fong General Hospital



PANELLIST
Dr Zhang Jin Bin
Senior Consultant
Department Research Officer
Department of Anaesthesiology, Intensive Care
and Pain Medicine
Tan Tock Seng Hospital



SPEAKER
Dr Michelle Leanne Lim
Associate Consultant
Department of Surgical Intensive Care
Singapore General Hospital



Scan the QR code or go to link to register:

<https://tinyurl.com/2p8encdx>

- +1 CPE Point for registered SMC & SNB Professionals
- For enquiries, email us at central_trauma@nhg.com.sg