

Annual Report

For the Year Ended 31 March 2022



Contents Page

About Us	3
The Board	7
Fundraising & Community Support	8
Community Outreach Initiatives	10
Our Key Programmes	11
Ng Teng Fong Healthcare Innovation Programme	13
Financial Highlights	15
List of Related Entities	16
Financial Statements & Reserves Policy	17
How You Can Help	20

About Us

In keeping with Mr Tan Tock Seng's legacy of giving, Tan Tock Seng Hospital (TTSH) set up a charity arm, TTSH Endowment Fund (now known as TTSH Community Fund) in August 1995 to improve the quality of life for our patients. From expensive non-standard medication to breathing equipment, mobility aids and dentures, we help needy patients gain greater independence, improve their quality of life and allow them to integrate back into the community. Our Charity also supports healthcare research, innovation and training for our staff and the community to deliver better patient care.



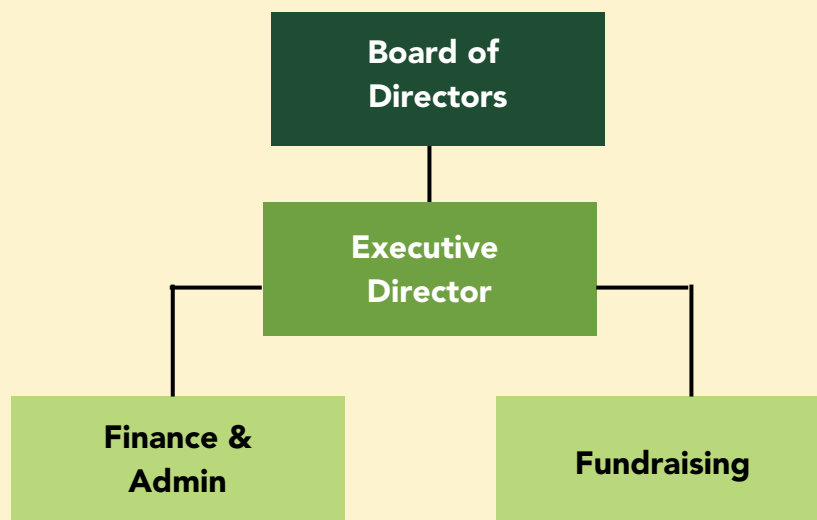
Vision **Adding years of healthy life.**

Mission **Building on our tradition; reaching out to the community; doing our best to serve, care and heal; together, we aim for excellence in cost-effective healthcare, education and research.**

Purpose **Promote all medical and health-related services that are exclusively charitable and for the benefit of the Singapore community.**



Organisation Chart



About Us

Conflict of Interest Policy

Our Charity has established procedures to manage potential conflicts of interest. Board members and staff are required, on an annual basis, to declare any potential conflict of interest that may interfere with their function or employment in the Charity.

Personal Data Protection Policy

We have put in place policies and procedures for the collection, use, disclosure and management of personal data in accordance to the Personal Data Protection Act (PDPA). We also have administrative, physical and technical measures to safeguard personal data in our possession and/or under our control. Our Charity was awarded the Data Protection Trustmark certification in January 2019, and was re-certified in January 2022.

Other Policies & Procedures

Our Charity has the following policies and procedures, which are reviewed and updated as and when there are changes.

- Enterprise Risk Management*
- Finance
- Fundraising
- Human Resources*
- Information Technology*
- Whistle-blowing*

*In accordance with Tan Tock Seng Hospital's and/or National Healthcare Group's policies, which are available on the TTSH / NHG Intranet and/or website.

Auditors

Ernst & Young LLP

Bankers

ANZ Singapore Limited

DBS Bank Ltd

United Overseas Bank Limited

Oversea-Chinese Banking Corporation Limited

Sumitomo Mitsui Banking Corporation

Fund Managers

Fullerton Fund Management Company Ltd

UOB Asset Management Ltd

About Us

Our Strategy

Tan Tock Seng Hospital (TTSH) is part of the National Healthcare Group (NHG) cluster, and the hospital has been entrusted to take care of the 1.4 million residents in central Singapore.

Half (57%) of TTSH's inpatients are aged 65 years and above. This is above the national average of 30%.

As the charity arm of the hospital, our Charity's strategic direction, mission and vision are aligned with that of NHG and TTSH.

In 2018, TTSH adopted the Central Health Model of Care empowered by the digitalisation journey towards a Hospital without Walls, where care can take place anytime and anywhere.

Together with community partners, we focus on wellness and preventive care, bringing healthcare closer to residents, and forging relationships that make us a resilient community.

With the launch of the Healthier Sg (Ministry of Health's life course approach to drive population health), there is impetus to keep the population out of hospitals and age well in place through wellness programmes and preventive care. This will also incentivise providers towards value rather than volume.

Information on Committees

TTSH Community Fund does not have sub-committees on the Board as we are not a large charity.

About Us

Board Selection, Recruitment and Training

Chairman of the Board is appointed by the Charity. The Corporate Secretary is appointed by the Board. Eminent persons of good repute and sound judgement, with considerable experience in public sector, private sector or healthcare are recommended and appointed to the Board by the Chairman.

Board members are independent from staff of the Charity.

Every new member undergoes orientation on operations and policies of the Charity, conducted by the Executive Director or designate.

Evaluating Board's Performance & Effectiveness

Our Charity has developed a self-evaluation checklist, to be conducted once every three years or per term, whichever is shorter.

This checklist is adapted from the Social Service Institute (SSI) Resources, the training arm of the National Volunteer and Philanthropy Centre (NVPC), to suit the needs and structure of each charity.

Board Re-nomination, Re-appointment & Retention

Board of Directors are appointed for up to three years for each term of appointment, renewable for subsequent terms with a maximum tenure of service not exceeding nine years (based on the 2017 Code of Governance).

None of the Board members have served for 10 consecutive years.

New members are introduced to ensure smooth succession and transition when the tenure of existing members are due or when existing members step down.

The Board

Chairman

Mdm Kay Kuok Oon Kwong
Date joined: 7 Feb 2014
Director, Kuok (S) Ltd

Directors

Ms Saw Phaik Hwa
Date joined: 7 Feb 2014

Mr Seow Choke Meng
Date joined: 7 Feb 2014
Chairman, Ren Ci Community Hospital

Dr Tan Chi Chiu
Date joined: 17 Aug 2017
Managing Director and Gastroenterologist
Gastroenterology & Medicine International
Pte Ltd

Mr Tan Kia Tong
Date joined: 5 Mar 2014
Technology Director, OSIM International Ltd

Ex-officio

Dr Eugene Fidelis Soh
Chief Executive Officer
Tan Tock Seng Hospital

Management

Mrs Eunice Toh
Director, Development Fund

Treasurer

Ms Tan Yee Peng
Date joined: 18 Aug 2021

Mr Yap Wai Ming
Date joined: 7 Feb 2014
Director, Morgan Lewis Stamford LLC

Mrs Eunice Toh
From 8 Jan 2014 to 11 May 2016
Re-appointed on 14 Sep 2018
Executive Director, TTSH Community Fund

Ms Laura Kho Min Zhi
Date joined: 18 Aug 2021
Director, Finance, MOH Holdings Pte Ltd

Mr Lim Meng Ann
Date joined: 6 Dec 2021
Managing Director and Head of Direct
Private Equity for Asia Pacific, CDPO
Singapore

Prof Chin Jing Jih
Chairman Medical Board
Tan Tock Seng Hospital

Company Secretary

Ms Cynthia Chan

Two board meetings were held for the financial year ending 31 March 2022:

- 22 Sep 2021: full attendance
- 25 Mar 2022: Mr Yap Wai Ming was unable to attend the meeting

Fundraising & Community Support

Stronger Together

Campaign period: 1 Apr - 31 Dec 2021

Amount raised: \$323,904

Year 2020 has certainly changed the way we live and work; but our nation has come so far together because we have stayed strong and supportive. Stepping into the new decade in 2021, we initiated the Stronger Together campaign to ensure that life goes on for our needy patients despite the pandemic.



Project Hongbao 2022

Campaign period: 1 Jan – 15 Mar 2022

Amount raised: \$37,996

Students from preschools and primary schools designed their own lunar New Year red packets to celebrate the Tiger year. They also generously donated a portion of their 'Hongbao money' or pocket money to support our needy patients.



We are grateful for the support from the following schools, some of which has been supporting Project Hongbao since we initiated this campaign.

Bukit Panjang Primary School, Fern Green Primary School, Evergreen Primary School, First Steps Preschool@Jurong, Little Greenhouse@JW, Pasir Ris Primary School, Pei Tong Primary School, Springfield Secondary School, Tampines Primary School, Westgrove Primary School, Xingnan Primary School, Xishan Primary School, Zhenghua Primary School

Fundraising & Community Support

Breast Cancer Awareness Month

Campaign period: 1 Oct - 31 Dec 2021

Amount raised: \$19,570

TTSH Breast Services created a Giving.sg campaign to raise funds for the newly set up TTSH Breast Cancer Research and Education Programme, which focuses on improving the response to current drug treatment, increasing the accuracy of breast imaging and more.



EndowUs Giving Machine

Campaign period: 1 Nov – 31 Dec 2021

Amount raised: \$5,609

Endowus selected TTSH Community Fund as one of the beneficiaries of their Giving Machines campaign.

Physical vending machines were placed in shopping malls, such as Square 2 at Novena, for donors to support various charitable causes. Donors can conveniently donate via digital means, and receive a card containing information of the charity / cause they have donated to.

Virtual 'giving machines' were also created on Giving.sg for donors to make online donation.



Community Outreach Initiatives

Future-proof Your Health Webinars

According to the Singapore Public Sector Outcomes Review, life expectancy of Singaporeans is among the highest in the world, at 81.4 and 85.7 years for men and women respectively. But many elderly persons are living their golden years in poor health. In line with the National Healthcare Group (NHG)'s vision of "Adding Years of Healthy Life", TTSH Community Fund, together with NHG Fund, has been organising a series of health-related webinars with the objective of helping our stakeholders future-proof their health.



A SPECIAL INVITATION Webinar Series

FUTURE-PROOF YOUR HEALTH

How Dementia & Hearing Loss are Linked

Studies have shown that patients with hearing loss may be two to five times more likely to develop dementia. Our speakers will be sharing about the link between dementia and hearing loss, and local research in this area.

Brought to you by NHG Fund and TTSH Community Fund

27 July 2021, Tuesday
12:30 - 1:30pm

SCAN QR CODE TO REGISTER!

Or you may register at bit.ly/future-proofyourhealth

According to the Singapore Public Sector Outcomes Review published in 2020, life expectancy of Singaporeans is among the highest in the world, at 81.4 and 85.7 years for men and women respectively. But many older adults are living their golden years in poor health.

In line with the National Healthcare Group (NHG)'s vision of "Adding Years of Healthy Life", NHG Fund and TTSH Community Fund are proud to present **Future-proof Your Health** - a webinar series on healthy ageing.

27 July 2021: How Dementia and Hearing Loss are Linked

Studies have shown that people with hearing loss may be two to five times more likely to develop dementia, depending on the severity of their hearing problems.

In Singapore, about one in 10 citizens (500,000 persons) have some form of hearing impairment. In this webinar, our Senior Consultant, Dr Ho Eu Chin, and Research Fellow (Audiologist) Dr William Go, shared about the link between hearing loss and dementia, as well as local research and development in this area.



A SPECIAL INVITATION Webinar Series

FUTURE-PROOF YOUR HEALTH

Does 3D Printing Help Improve Medical Surgery?

Do you know that 3D printing technology can be used to assist surgery? Can this technology benefit patients and doctors alike? Dr Michael Yam from Tan Tock Seng Hospital will be sharing real-life examples of how 3D printing technology is being used in Orthopaedic surgeries.

Brought to you by NHG Fund and TTSH Community Fund

3 March 2022, Thursday
12:30 - 1:30pm

SCAN QR CODE TO REGISTER!

Or you may register at bit.ly/future-proofyourhealth-3dp

According to the Singapore Public Sector Outcomes Review published in 2020, life expectancy of Singaporeans is among the highest in the world, at 81.4 and 85.7 years for men and women respectively. But many older adults are living their golden years in poor health.

In line with the National Healthcare Group (NHG)'s vision of "Adding Years of Healthy Life", NHG Fund and TTSH Community Fund are proud to present **Future-proof Your Health** - a webinar series on healthy ageing.

3 March 2022: Does 3D Printing Help Improve Medical Surgery

In this webinar, Associate Consultant, Dr Michael Yam shared about the use of 3D printing in patient and medical student education, and pre-operation planning.

He also touched on the benefits of using 3D printing in surgery, including increased accuracy and stability, as well as improved efficiency in medical surgery.

Our Key Programmes

IWanttoGoHome (IWGH) Fund

Expenses: \$157,692 | Persons Assisted: 263

Many patients want to be discharged home quickly; but the needy sick, particularly the elderly, with limited savings and/or little family support, can ill afford the out-of-pocket expenses for their continued needs when they go home - wheelchairs, walking aids, interim dialysis treatment, breathing equipment, diapers, wound dressings - the list goes on. IWGH provides financial assistance to needy patients so that they can be discharged without delay.



33-year-old Shalee was diagnosed with Primary Progressive Multiple Sclerosis (PPMS) in 2017. It caused her muscles to weaken due to the damaged nerve fibers. Besides constant fatigue, it was challenging for her to adapt to activities of daily living (ADL) in a normal wheelchair.

Shalee received financial support from TTSH Community Fund to acquire a more user-friendly wheelchair, enabling her to gain independence in moving around on her own. This also allowed her to channel her savings towards her physiotherapy sessions and day to day living expenses and helped her with overall quality of life.



I was very worried about many things - the medical expenses, the daily essentials, my family, my work, my future, and the costs of safety devices recommended by the occupational therapists.



Community Rehabilitation Programme (CRP)

Expenses: \$910,028 | Persons Assisted: 283

A patient's recovery journey continues even after the patient has been discharged. However, patients who are bedbound or have issues moving around independently are unable to get to and from hospital and day rehabilitation centers. Some cannot afford the costly fees charged by private, home-based rehabilitation services.

CRP brings the necessary therapy equipment and services to patients' homes to conduct rehabilitation exercises for our patients.

Our Key Programmes

Help Me Go Home Programme

Expenses: \$21,134 | Persons Assisted: 15

Help Me Go Home Programme subsidises the high cost of breathing machines which can cost anywhere between \$6,000 and \$22,000.

Patients under this programme usually suffer from severe respiratory conditions such as lung cancer, spinal cord injuries, muscular dystrophy or stroke. Many are bedbound and have difficulty breathing or speaking, and they are fully dependent on the breathing equipment to stay alive.



Helping ELderly Patients (HELP) Programme

Expenses: \$95,170 | Persons Assisted: 77

Patients supported under HELP are the elderly aged 55 years and above who have little or no savings. In some cases, they do not have any caregivers to turn to.

HELP enables these needy elderly patients to gain access to proper treatment and care, which in turn enable them to maintain their health and enjoy better quality of life. This reduces hospital readmissions, and cuts down on out-of-pocket expenses.



Programme of All Inclusive Care for the Terminally Ill (PACT)

Expenses: \$13,226 | Persons Assisted: 158

PACT helps terminally ill patients and families by providing interim funding for the expenses needed to care for patients in their home or the community. It also engages patients in activities such as art and music therapy with the objective of alleviating pain and symptoms, improving anxiety and depression, and enhancing communication.



NCID (National Centre for Infectious Diseases) Cares

Expenses: \$71,948 | Persons Assisted: 299

HIV/AIDS affects patients physically and emotionally. Many patients not only face the physical impact as the virus destroys their immune system, but they face discrimination and stigmatization due to misinformation about HIV/AIDS, which may lead to social isolation. NCID Cares looks after the physical and emotional well-being of HIV/AIDS patients and provides support for their families.

Ng Teng Fong Healthcare Innovation Programme

In 2015, the family of the late Mr Ng Teng Fong contributed \$52 million to Tan Tock Seng Hospital to set up the Ng Teng Fong Healthcare Innovation Programme (NTF HIP). The objective of this 15-year, multi-track programme is to drive value through healthcare innovation and spur improvement in patient care. Since its inception, the programme has funded training candidates, as well as innovation and community enabling projects under five tracks. Some of the latest projects are highlighted in this report.

Track 1: Strategic Training

CHI Fellowship Programme

The CHI Fellowship Programme is a 16-week training and development programme led by the Centre for Healthcare Innovation (CHI) programme directors and 31 joint SG-UK teaching faculty members to groom emerging health systems leaders and innovators who are effective in learning change and transforming care within the health ecosystem.

There were a total of five TTSH participants in the inaugural intake. In the post programme survey, majority of the participants feedback that the training achieved the stated objectives, and agreed that the knowledge is useful and applicable in their work.

Track 2: Innovation

Development of Web-based Application Eye Doctor in Pocket – Poc Doc

This project aims to develop an affordable, comprehensive and engaging software for functional assessment and home monitoring of common causes of preventable vision loss or blindness. The team developed a visual acuity portal (a clinical measurement of how the eyes function) and is currently finalising the testing of colour discrimination.

Track 3: Community Enabling

Centre for Allied Health & Pharmacy Excellence (CAPE)

Track 3: Tech-enabled Care

The project which, commenced in January 2022, aims to innovate the prosthetic practice through remote 3D-scanning, 3D-design rendering and 3D-printing of prosthetic sockets for transtibial amputee patients via a review of its business case, care and work processes to identify gaps and opportunities.

Ng Teng Fong Healthcare Innovation Programme

Track 4: Strategic Innovation

Clinics Without Walls (CoW)

CoW is the next phase of TTSH's outpatient care transformation journey which aims to create a mobile experience that addresses the needs of patients through the use of digital tools.

There are 11 projects under the CoW; one is completed, one is expected to commence in FY2022, six in FY2023 and three in FY2024. To date, 92% of TTSH clinics have adopted this implementation.

Track 5: Strategic Research

This new track, introduced in April 2022, supports thematic research programmes aligned to the hospital's mission in seeking population-focused outcomes for the sustainability of our health system.

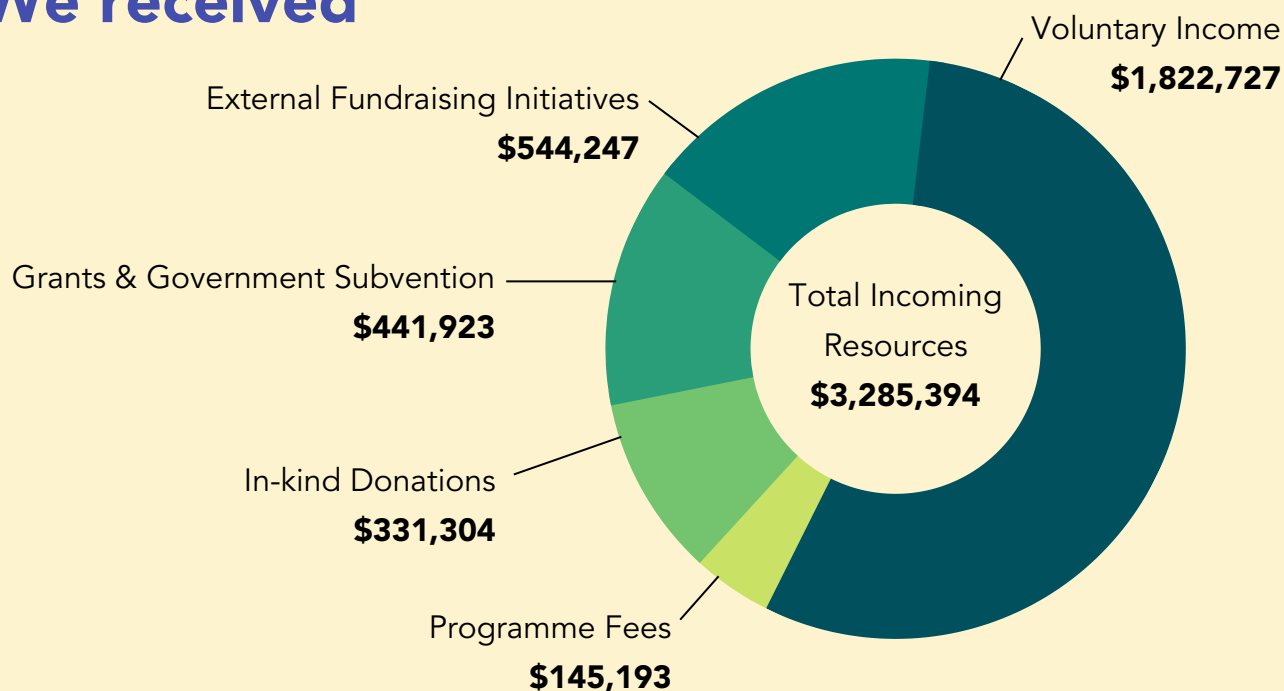
The new track also seeks to develop a pipeline of clinician-researchers who will contribute effectively to TTSH's mission as well as that of the national research landscape.

Financial Highlights

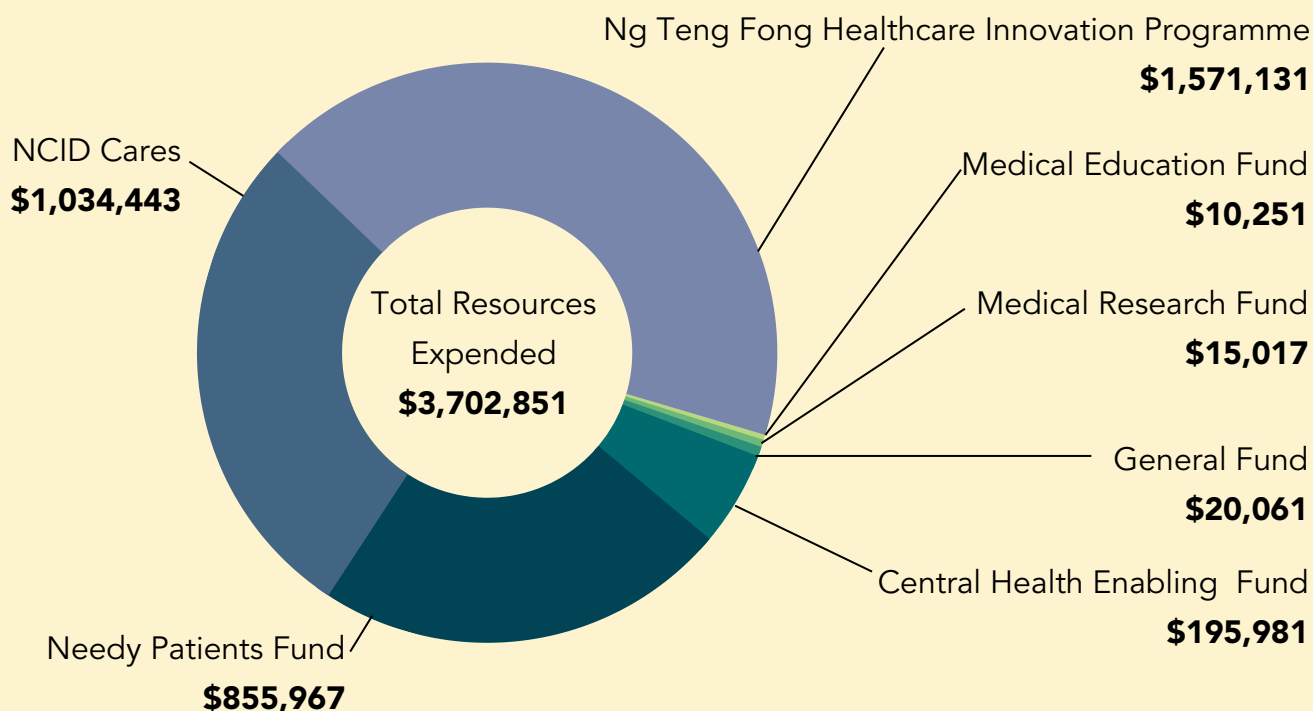
Supported **2,216** unique beneficiaries



We received



We used the funds for the following



List of Related Entities

Entity	UEN	Relationship
MOH Holdings Pte Ltd	198702955E	Intermediate Holding Company
National Healthcare Group Pte Ltd	200002150H	Intermediate Holding Company
Tan Tock Seng Hospital	199003683N	Immediate Holding Company
National Healthcare Group Fund	201623926M	Related Company
National Skin Centre Health Fund	202010012C	Related Company
Woodbridge Hospital Charity Fund	201940371M	Related Company
Alexandra Health Fund Limited	201427909W	Related Company
Geriatric Education and Research Institute Limited	201502154R	Related Company
National Skin Centre (Singapore) Pte Ltd	198801862W	Related Company
Alexandra Health Pte. Ltd.	200717564H	Related Company
WoodlandsHealth Pte. Ltd.	201426682D	Related Company
Woodlands Health Fund Limited	202141418Z	Related Company
Yishun Community Hospital Pte. Ltd.	201333346W	Related Company
Admiralty Medical Centre Pte. Ltd.	201618776K	Related Company
National Primary Care Pte. Ltd.	201228999C	Related Company
Central-North Primary Care Network Pte. Ltd.	201229016M	Related Company
Hougang Family Medicine Clinic Pte. Ltd.	201526353R	Related Company
NHG-Johns Hopkins Singapore Institute Pte. Ltd.	199805214Z	Related Company

Note: All entities under MOH Holdings (MOHH) and National Healthcare Group (NHG) are also related companies of the Charity.

Statement of Financial Position

For the Year Ended 31 March 2022

	Note	2022 \$	2021 \$
Assets			
Property, plant and equipment	4	11,013	–
Other investments	5	33,695,595	34,249,905
Non-current assets		33,706,608	34,249,905
Cash and cash equivalents	6	43,467,340	43,240,891
Other assets	7	2,014,070	644,224
Interest receivables		38,554	40,579
Prepayments		293	781
Current assets		45,520,257	43,926,475
Total assets		79,226,865	78,176,380
Liabilities			
Trade and other payables	8	1,058,285	496,835
Deferred income	9	2,014,070	644,224
Grant received in advance		12,102	16,478
Current and total liabilities		3,084,457	1,157,537
Net assets		76,142,408	77,018,843
Funds:			
Restricted funds			
Main Fund			
- Needy Patients fund	10(a)(i)	5,124,107	4,639,928
- Medical Education fund	10(a)(ii)	1,946,989	2,122,070
- Medical Research fund	10(a)(iii)	1,149,675	1,162,715
- Patient Care fund	10(a)(iv)	3,949,549	3,487,499
- Central Health Enabling fund	10(a)(v)	3,915,918	4,104,387
Ng Teng Fong Healthcare Innovation Program	10(b)	52,168,307	54,243,539
		68,254,545	69,760,138
Unrestricted fund			
General fund		7,887,863	7,258,705
Total funds		76,142,408	77,018,843

Please refer to the audited financial statements for more details. Except for Ng Teng Fong Healthcare Innovation Programme which is expected to be fully utilised by 2032, there is no planned timing for the use of other restricted funds.

Income & Expenditure Statement For the Year Ended 31 March 2022

	Note	2022			2021			Total Funds
		Restricted Funds	Unrestricted Fund	Total Funds	Restricted Funds	Unrestricted Fund	Total Funds	
		Ng Teng Fong Healthcare Innovation Program	Main Fund	General Fund	Ng Teng Fong Healthcare Innovation Program	Main Fund	General Fund	
		\$	\$	\$	\$	\$	\$	\$
Incoming resources								
Incoming resources from:								
- Voluntary income	11	-	1,532,087	290,640	-	1,477,030	678,514	2,155,544
- Income from fund-raising activities	12	-	200,610	343,637	-	221,116	765,005	986,121
- Deferred income - in-kind donation	9	-	331,304	-	-	429,132	-	429,132
Grant income		-	221,876	-	-	211,635	-	211,635
Government subvention		-	220,047	-	-	205,523	-	205,523
Incoming resources from charitable activities		-	145,193	-	-	114,356	-	114,356
Total incoming resources		-	2,651,117	634,277	-	2,658,792	1,443,519	4,102,311
Resources expended								
Costs of generating funds:								
- Fund-raising expenses	12	(1,570,975)	(2,107,356)	(6,226)	-	(333)	(26,455)	(26,788)
Charitable activities		(156)	(4,303)	(13,835)	(1,358,742)	(2,084,480)	-	(3,443,222)
Governance costs					(241)	346	(12,495)	(12,390)
Total resources expended		(1,571,131)	(2,111,659)	(20,061)	(1,358,983)	(2,084,467)	(38,950)	(3,482,400)
Finance (cost)/income, net	13	(504,101)	30,181	14,942	4,058,332	103,763	47,048	4,209,143
Net (outgoing)/incoming resources, representing total comprehensive income for the year	14	(2,075,232)	569,639	629,158	2,699,349	678,088	1,451,617	4,829,054

Reserves Policy

	As at 31 Mar 2022 \$000	As at 31 Mar 2021 \$000	% Increase / (Decrease)
Unrestricted Funds (Reserves)	7,888	7,259	8.67%
Restricted / Designated Funds Main Fund	16,086	15,517	3.67%
Total Funds (Main Fund) (A)	23,974	22,776	5.26%
Annual Operating Expenditure (Excludes fundraising expenses and expenses incurred from NTF HI Programme and CHEF)	1,930	2,090	(7.66%)
Ratio of Reserves to Annual Operating Expenditure for Main Fund	4.09	3.47	17.67%
Ng Teng Fong Healthcare Innovation Programme (B)	52,168	54,244	(3.83%)
Total Funds (A + B)	76,142	77,020	(1.14%)

TTSH Community Fund has a Reserve Policy to provide clarity in the management of our funds and ensure we have enough resources to continue running existing programmes and support other operational needs. TTSH Community Fund does not have paid staff. Major operating expenses such as administrative, manpower and operating costs are supported by Tan Tock Seng Hospital Pte Ltd.

Our current year unrestricted funds (reserves) of \$7.8m will be able to fund about four years of projected annual operating expenditure.

The fund may selectively invest its reserves subject to:

- (a) Approval from the Board;
- (b) TTSH's/ NHG's financial policies and practices; and
- (c) MOHH's Common Investment Mandate and policy.

The Board reviews the amount of reserves on a yearly basis to ensure that there are adequate funds to support key charitable programmes and operational needs.

How You Can Help

As a charity with limited resources, we rely on the generous donations from corporate and individual donors to sustain our patient-centred programmes.

Corporate partners can organise a physical fundraiser such as charity sale, and donate the proceeds to our Charity.

Peer-to-peer fundraising is a simple and effective way for individuals to raise funds to help our beneficiaries. On special occasions such as birthdays, Christmas and weddings, get your family members and friends to donate to TTSH Community Fund. You can do so by creating a campaign page on www.giving.sg. Contact us today to get started (refer to contact details on the last page).

Donate to Our Cause

Download Softcopy Donation Form

Scan the QR code below to download a copy of donation form from our website



Cheque

Issue cheque to 'TTSH Community Fund' and write your full name, full NRIC (for tax exemption) and mailing address at the back of the cheque.

Mailing Address:
TTSH Community Fund
Tan Tock Seng Hospital
11 Jalan Tan Tock Seng
Singapore 308433

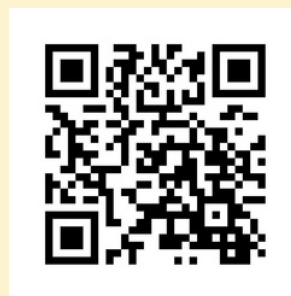
Make an Online Donation

Scan the QR code below

Online Donation Form



Giving.sg





UEN: 201400920N

Registered Address

Tan Tock seng Hospital
11 Jalan Tan Tock Seng Singapore 308433

TeL 6357 2500 | Email: donate@ttsh.com.sg

Website: www.ttsh.com.sg/about-ttsh/ttsh-community-fund

Date Incorporated as a Public Company Limited by Guarantee: 8 January 2014

Current IPC period: 20 July 2021 to 19 July 2024

TTSH
Community
Fund
A legacy of Giving, Caring and Serving

