

Department of
ANAESTHESIOLOGY, INTENSIVE CARE AND PAIN MEDICINE

Pre-Admission Counselling and Evaluation (PACE) Clinic



VISIT TO PACE CLINIC

Before admission, you may be requested to visit the PACE Clinic for financial counselling and pre-operative evaluation.

PACE Clinic Appointment

Date: _____ Time: _____

Note: **Fasting is not required** for your appointment with PACE Clinic.
Continue your usual medication unless instructed by your doctor.

WHAT TO BRING FOR YOUR APPOINTMENT?

Compulsory -

- Identity Card/Passport/Work Permit/Employment Pass
- All your current medications
- Letter of Guarantee (if applicable)

If Applicable -

- Recent medical reports/blood test results, ECG, X-ray film with report (taken within last 6 months)
- Civil Service Card (CSC)/Public Service (PS) Card
- Medical Benefit Identity Memo (MBIM) for SAF Personnel
- Singapore Blood Transfusion Service (BTS) Medical Benefit Card
- Public Assistance (PA) card/Medical Exemption Card/ Rent and Utilities Assistance Scheme (RUAS) Card

Initial Payment for Pre-admission Assessment/Test

You will be informed by your clinic on the pre-admission assessment/ test initial charges upon scheduling for PACE appointment (Not applicable for Subsidised Singaporean and Permanent Resident patients).

IMPORTANT: Please adhere to your allocated PACE appointment or surgery date and refrain from changing as we may not be able to cater another slot promptly.

However, if there is a need to reschedule your PACE appointment or surgery date, please contact PACE at:



Tel: 6357 2244 / 6357 2218

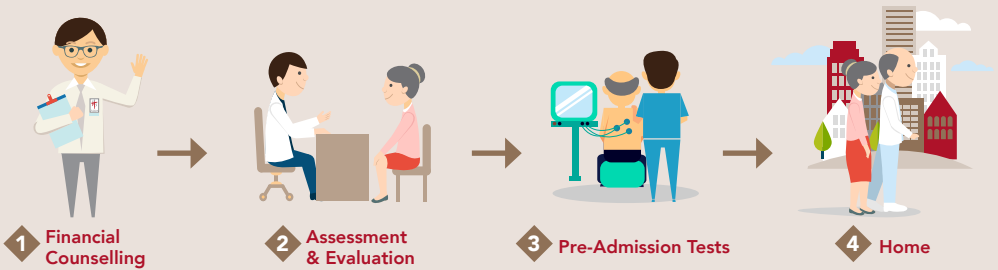
Monday - Friday: 8.30am to 5.30pm

Email: paceclinic@ttsh.com.sg

YOUR CARE JOURNEY AT PACE CLINIC

A Pre-admission Counselling and Evaluation (PACE) Clinic consultation provides financial counselling and pre-operative evaluation to assess your body's condition to cope with the stress of surgery.

Your Specialist Outpatient Clinic (SOC) will book the PACE appointment for you. **The PACE visit may take 3 hours or more** to complete all required investigations and counselling. For patients who are scheduled for surgery that requires local anaesthesia (LA), only financial counselling will be provided during PACE visit. If you require Haemodialysis, please ensure the PACE appointment is on a non-dialysis day.



Tele-Consultation

Enjoy greater convenience from the comfort of your home with enhanced healthcare accessibility. If eligible, your pre-operative assessment and counselling may be done through videoconferencing, and Financial Counselling over Phone Consultation.



AM I ELIGIBLE?

Criteria to Participate Tele-Consultation	Exclusion Criteria:
<ol style="list-style-type: none"> Age < 70 years old With stable or no chronic medical conditions Access to email and smart phone/device 	<ol style="list-style-type: none"> Age < 21 years old (excludes NSF's) On blood-thinning medications such as Aspirin or Plavix History of stroke, heart disease, or kidney failure Known cognitive impairment

If you would like to participate, you may call PACE at 6357 2238 to find out if you are suitable for Tele-Consultation.

1 FINANCIAL COUNSELLING

If you are scheduled for a surgery, you may want to find out about the cost and the payment options of the hospitalisation bill. Our financial counsellors will provide you with an estimated hospitalisation bill before your admission*.

The estimated bill is calculated based on the bed or facility charges of your preferred ward type, daily treatment fees, standard investigations, standard medications, surgery or procedure charges, as well as the estimated length of stay.



During the financial counselling session, we will also inform you on your payment options, such as:

- Estimated amount of Medisave you can utilise
- Estimated MediShield Life/ Integrated Shield Plan coverage
- Estimated cash payment or initial deposit of your hospitalisation bill

* Your actual bill may differ depending on your medical condition, additional treatment needed and actual length of stay.

2

ASSESSMENT AND EVALUATION

Depending on the type of surgery and your medical condition, you may be assessed by a doctor or a specially trained nurse at PACE. This is to determine whether you are medically fit for the surgery.

The assessment may include:

- Medical history taking
- Medication list review
- Physical examination



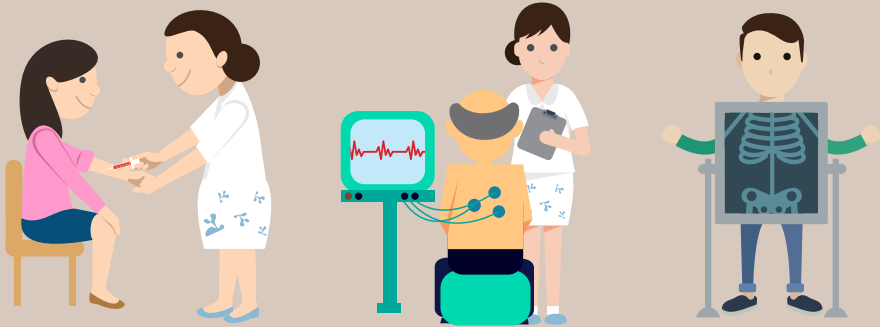
You will be briefed on pre-operative instructions to prepare you for the surgery, e.g. medications that you need to stop.

Your doctor or nurse will also discuss with you the different types of anaesthesia, their benefits and risks, as well as post-surgery pain management.

3 PRE-ADMISSION TESTS

You may have to undergo some investigations such as blood test, electrocardiogram (ECG), chest X-ray, etc.

There is no need to wait for the test results but we will contact you if abnormal results are detected and further tests are required.



4 HOME

You have completed your PACE journey.

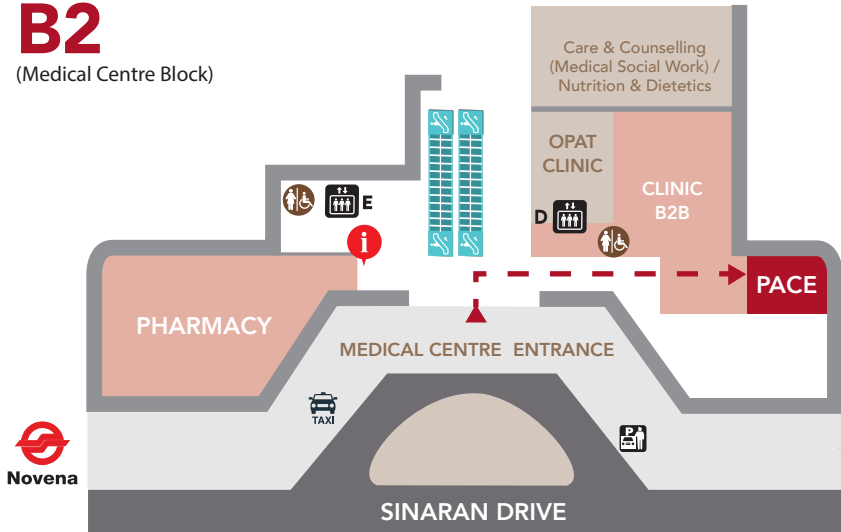
However, if your medical condition require further review before the surgery, you may be referred to other medical specialists before proceeding with the surgery. This is to ensure you have the safest possible surgery.



GETTING HERE

B2

(Medical Centre Block)



LOCATION

Medical Centre Block,
Basement 2
Tan Tock Seng Hospital.

DIRECTIONS

PACE Clinic is located just
opposite the Outpatient
Pharmacy at Basement 2.

Enter from Clinic B2B
and walk straight
towards the PACE Clinic.

CLINIC OPERATION HOURS

Monday to Friday : 8.30am –
5.30pm

Saturday, Sunday : Closed

Public Holiday : Closed

CONTACT US

Tel: 6357 2244/ 6357 2218

Email: paceclinic@ttsh.com.sg

Pre-Admission Counselling and Evaluation (PACE) Clinic
TTSH Medical Centre, Level B2

For Appointment, please contact: 6357 2244 / 6357 2218



Scan the QR Code with your smart phone to access the
information online or visit
<http://bit.ly/TTSHHealth-Library>

Was this information helpful?
Please feel free to email us if you have any feedback
regarding what you have just read at
patienteducation@ttsh.com.sg

